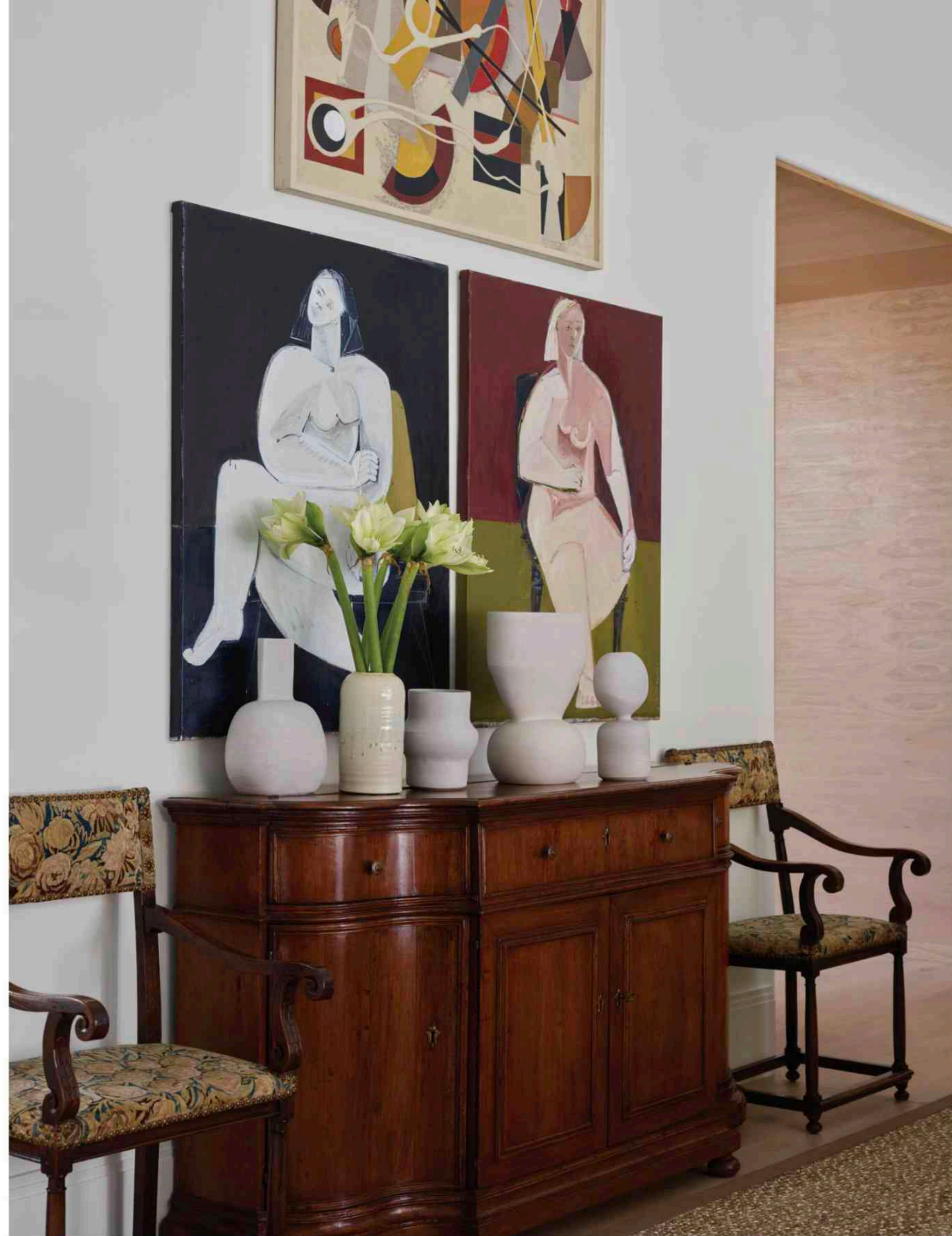


# CALIFORNIA *DREAMING*

Evoking coastal charm with soaring proportions and indoor-outdoor connectivity, the 2023 HOME FOR THE HOLIDAYS DESIGNER SHOWHOUSE is a blissful escape from the everyday

Principal Photography by EMILY FOLLOWILL  
and KELLY BLACKMON  
Produced by LAUREN IVERSON  
Written by JENNIFER BOLES,  
JENNIFER BRADLEY FRANKLIN,  
and CLAIRE RUHLIN



SPEAKERS GHT Group  
WING CHAIRS WITH  
CUSTOM SLIPCOVERS  
Dennis & Leen SWIVEL  
CHAIRS, LARGE SOFA  
Rose Tarlow LOUNGE  
CHAIRS IN TAPESTRY  
Coup Studio BRONZE END  
TABLE, RECTANGULAR  
END TABLE Gregorius  
Pineo ANTIQUE  
WALNUT-AND-TAPESTRY  
ARMCHAIRS Robuck  
ARTWORK Meighan  
Morrison, Sylvia McEwan,  
and Kimo Minton through  
Pryor Fine Art

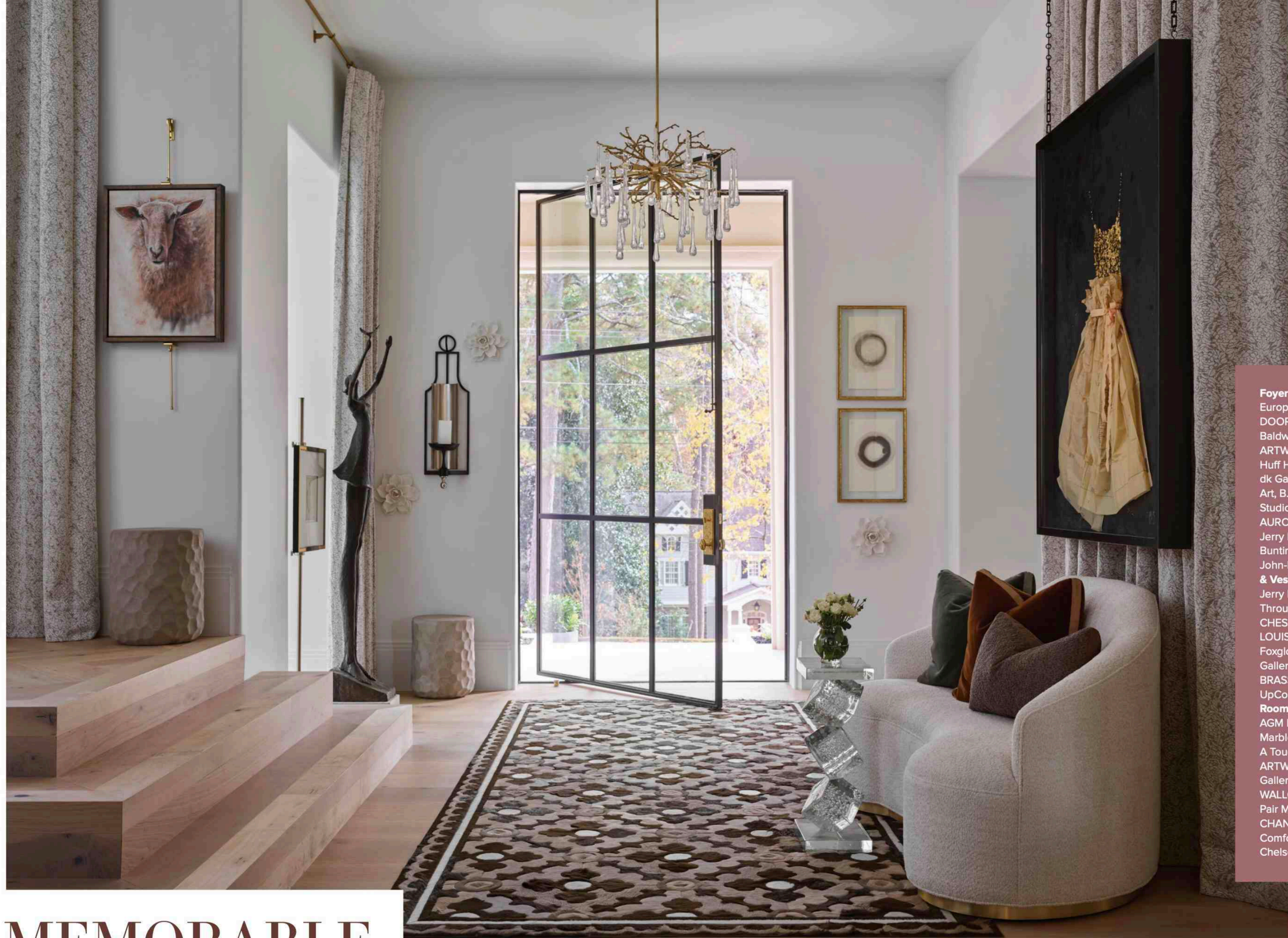
## MASTERFUL MIX

LIVING ROOM *Barbara Westbrook,  
Westbrook Interiors*

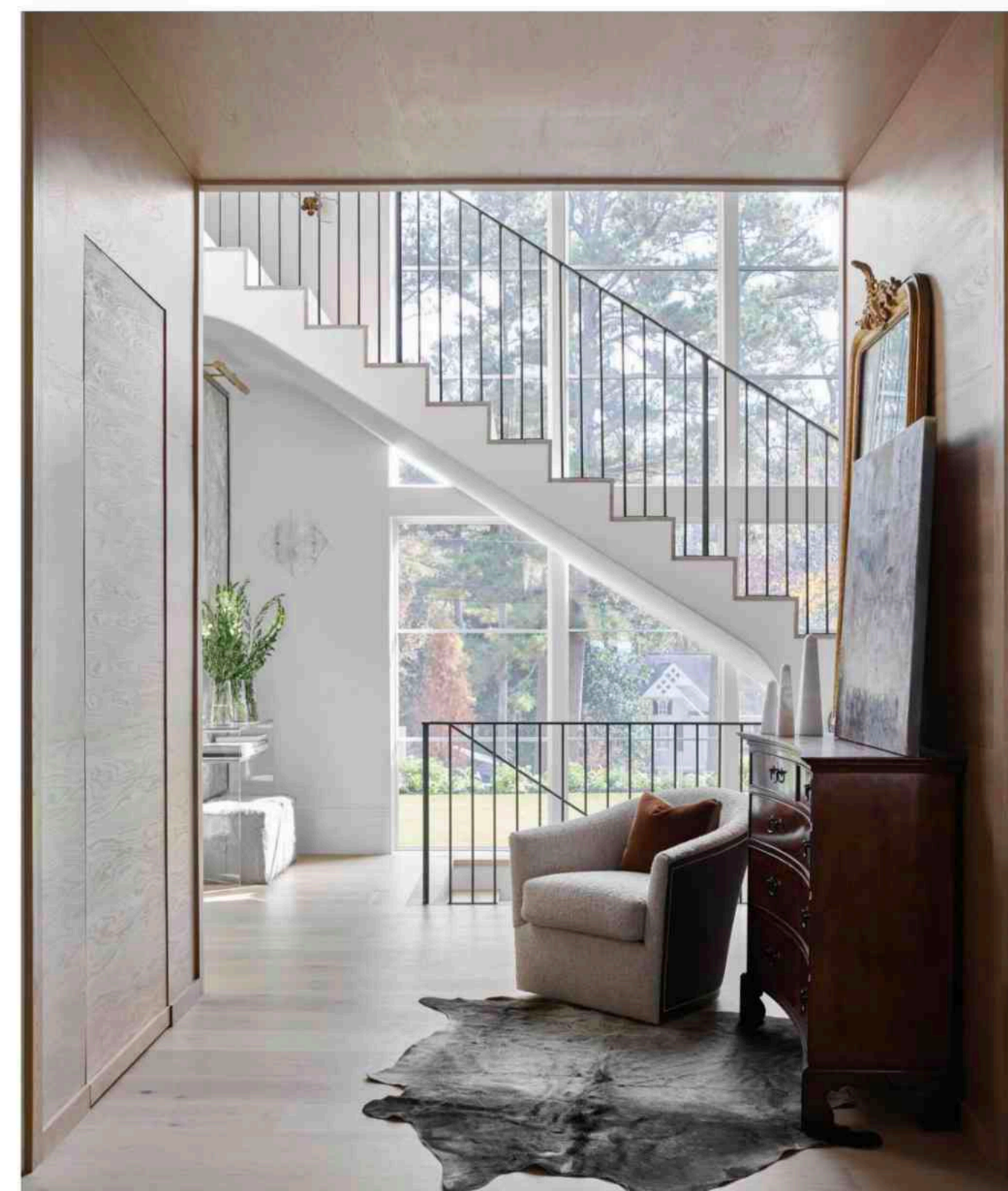
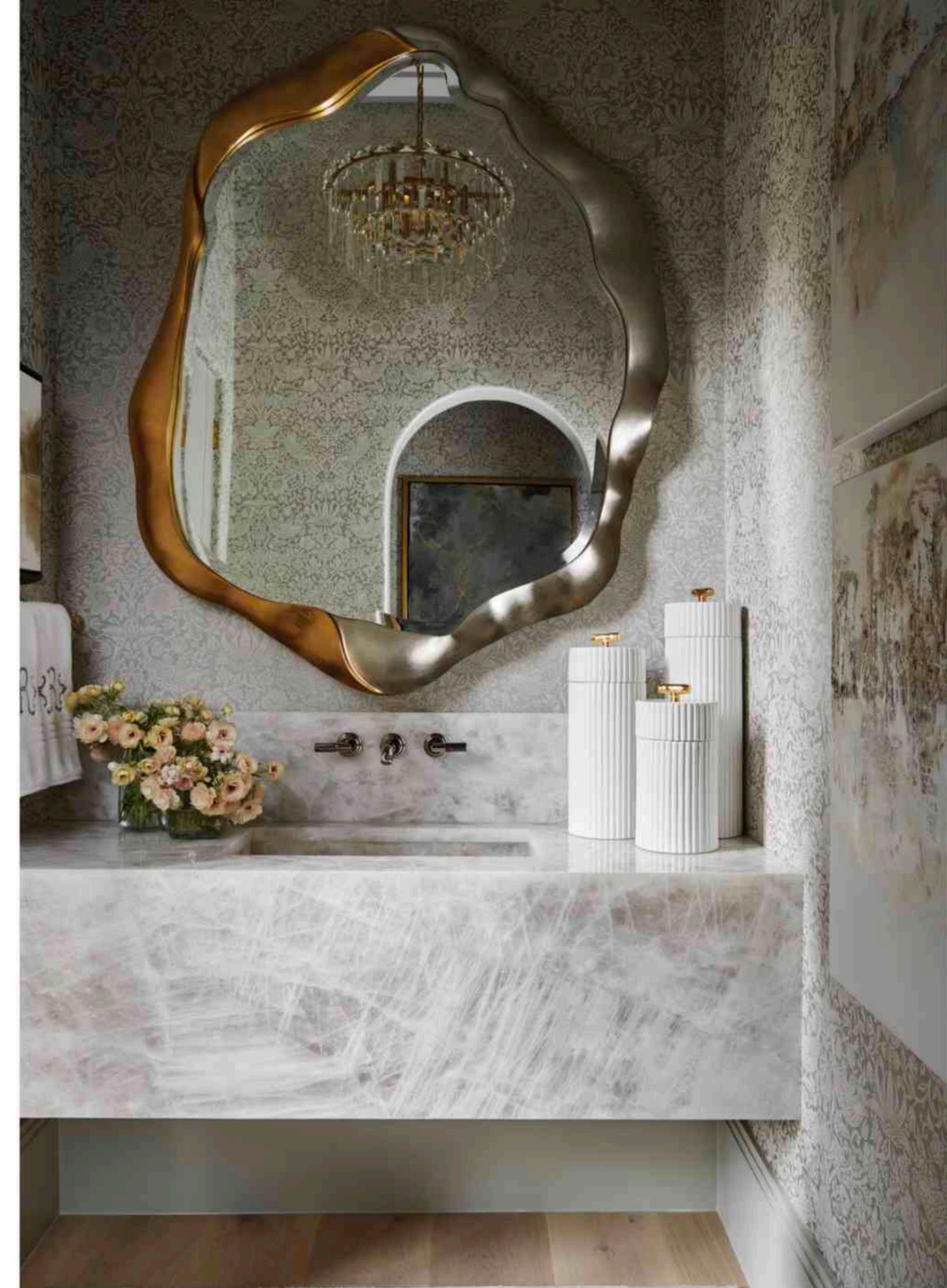
Upon entering the grand family room at the 2023 Home for the Holidays Showhouse, it wasn't uncommon to hear an audible gasp by wowed visitors—and rightfully so. Relaxed, warm, and elegant, designer Barbara Westbrook credits the home's architecture with inspiring the easygoing, yet stylishly polished look of the soaring space. "The architecture is very chic and has a streamlined California vibe. It's a great backdrop for almost any style of interior furnishings." Slipcovered furniture—including a pair of sofas, wing chairs, and an olive alpaca-covered ottoman—invites lounging, as

does a pair of low-profile chairs that are sumptuously upholstered in tapestry. Another welcoming gesture is the room's warm color palette of cognac, deep brown-burgundy, and rich olive greens that complement the creamy white walls—a fitting canvas for the accessory-stacked shelves and the contemporary artwork that hangs in the space, particularly the Meighan Morrison painting above the statement fireplace. An antique walnut credenza and an 18th-century tole lantern with pale lavender glass are singular notes in an overall beautiful, comfortable space. —Jennifer Boles





**Foyer FLOORING** The European Company  
**DOOR HARDWARE** Baldwin Hardware Direct  
**ARTWORK** Through Huff Harrington Fine Art, dk Gallery, Pryor Fine Art, B.D. Jeffries, Gwen Studios  
**SETTEE FABRIC, AURORA VII SCULPTURE** Jerry Pair  
**RUG** Kyle Bunting  
**CHANDELIER** John-Richard  
**Stair Hall & Vestibules DRAPERY** Jerry Pair  
**ARTWORK** Through dk Gallery  
**CHEST** Holland MacRae  
**LOUIS PHILIPPE MIRROR** Foxglove Antiques & Galleries  
**SWIVEL CHAIR, BRASS FLOOR LAMP** UpCountry Home  
**Powder Room COUNTERTOP** AGM Imports Granite & Marble, fabricated by A Touch of Stone, Inc.  
**ARTWORK** Through dk Gallery and Gwen Studios  
**WALLCOVERING** Jerry Pair  
**MIRROR** John-Richard  
**CHANDELIER** Visual Comfort & Co.  
**CANISTERS** Chelsea House



# MEMORABLE MOMENTS

**FOYER, STAIR HALL, VESTIBULES AND POWDER ROOM**  
*Kim Regas, Regas Interiors*

Designer Kim Regas created an assortment of vignettes to unite the foyer, stair hall, and vestibules, which all featured varying ceiling heights. For instance, “the base of the stairs was a dramatic moment to create balance and add a landing spot that could be seen as you enter the front door and as you are coming down the stairs,” says Regas. Two-story drapery panels emphasize floor-to-ceiling windows, while a geometric hide rug and gold leaf artwork

ground the foyer. In the powder room, a Jerry Pair wallcovering served as the designer’s jumping-off point. “I fell in love with the wallpaper pattern and knew I wanted to create a dramatic, sexy room that flowed from the foyer and did not compete with it,” explains Regas. “We carried one of the strong colors from the hall into the powder room and made it more tonal using one color versus all of the strong colors in the foyer.”—*Claire Ruhlin*



# DINING DELICACY

**DINING ROOM** *Brittany Cason  
Johnston, Brittany Cason Interior Design*

Dining rooms are often interior designer Brittany Cason Johnston's favorite room in any home. "I grew up around my grandmother's and mother's tables and have so many special memories because of all the meals and conversations shared over holidays and Sunday dinners." To create an inviting, layered, and visually interesting space, she took inspiration from Gracie wallpaper featuring a hand-painted chinoiserie motif on a silver background. "It's sophisticated and such a feast for the eyes right

when you enter the room." The designer imagined multiple generations enjoying meals around the Regency mahogany table covered with a custom fringed table skirt, situated beneath a glittering antique Italian crystal-and-silvered wood chandelier. The wallpaper's drama is complemented by floor-to-ceiling blush pink silk draperies, with an elegant Schumacher pleated ruffle trim. Both beautiful and functional, Johnston hopes the whimsical space inspires others to utilize their formal rooms more often. "I use my dining room all the time; it's not just for special occasions." —Jennifer Bradley Franklin

FLOORING The European Company SILVER GROVE WALL PANELS Gracie NOTTAWAY GOLD SCONCES Curry & Company ITALIAN CRYSTAL-AND-SILVERED WOOD CHANDELIER, MARBLE COLUMN, CHINESE CARVED JADE CRANES, PORCELAIN VASES William Word Fine Antiques REGENCY MAHOGANY DINING TABLE Jonathan Charles OBELIA PEWTER SISAL RUG Stark SIGNET MIRROR, VENEZIA LAMPS Uttermost Revelation LOUIS XVI BUFFET Le Chateau



**Kitchen CABINETRY,**  
**CUSTOM HARDWARE**  
 Kingdom Woodworks  
**APPLIANCES** Sub-Zero,  
 Wolf, and Cove through  
 Guy Gunter Home, installed  
 by Beautiful Installations  
**COUNTERTOPS** AGM  
 Imports Granite & Marble,  
 fabricated by A Touch of  
 Stone, Inc. **FLOORING**  
 The European Company  
**LIGHTING** Visual Comfort &  
 Co. **FAUCETRY** Waterstone  
 through PDI **Breakfast**  
**Room TABLE** Baker  
**DRAPERY** Jim Thompson  
**ARTWORK** Through Gregg  
 Irby Gallery **Scullery**  
**CABINETRY** Kingdom  
 Woodworks **COUNTERTOPS**  
 AGM Imports Granite &  
 Marble, fabricated by  
 A Touch of Stone, Inc.  
**FAUCETRY** Waterstone  
 through PDI **APPLIANCES**  
 Sub-Zero, Wolf, and Cove  
 through Guy Gunter Home,  
 installed by Beautiful  
 Installations **LIGHT FIXTURE**  
 Visual Comfort & Co.



## EDITED STYLE

### KITCHEN, BREAKFAST ROOM, SCULLERY, BUTLER'S PANTRY, VESTIBULE, AND INTERIOR SPECIFICATIONS *Kit Castaldo, Kit Castaldo Design*

Streamlined and relaxed, the kitchen reflects the home's California sensibility, with custom stained white oak cabinetry by Kingdom Woodworks and herringbone-patterned floors giving the space a warm, inviting appearance. "In this kitchen, nothing is in your way," says Castaldo, who hid appliances behind cabinetry and opted not to have a hood, allowing the stone and open shelving to define the main wall. "We find beauty in restraint and simplicity." Cooking is made easy thanks to two fluted islands painted in a high-gloss black and topped with marble that mirrors the backsplash. Finishing touches include sculptural upholstered barstools and an eye-catching pair of brass light fixtures. In the breakfast room, a serene palette takes shape with striking blue draperies and abstract artwork reflecting the nearby pool, whereas chocolate brown velvet chairs, a sleek dining table and a glamorous brass-and-crystal chandelier add a luxurious layer to morning meals. In the nearby scullery, form and function is the name of the game with gracious storage and an abundance of prep space. "Everything we envisioned came to life and the result is an elegant, casual, family-friendly home." —Jennifer Boles





“Everything we envisioned came to life and the result is an elegant, casual, family-friendly home.”  
—Kit Castaldo

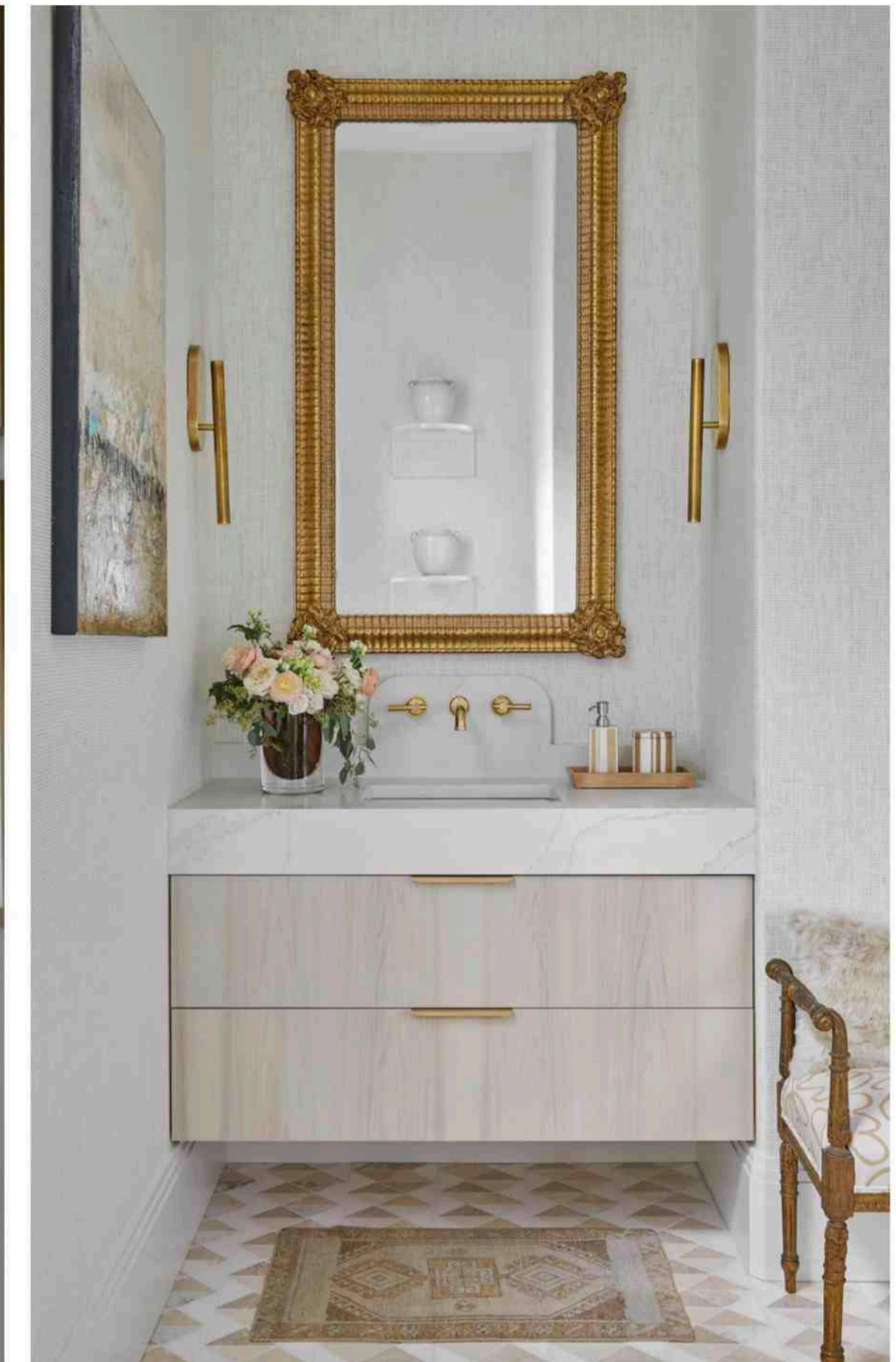
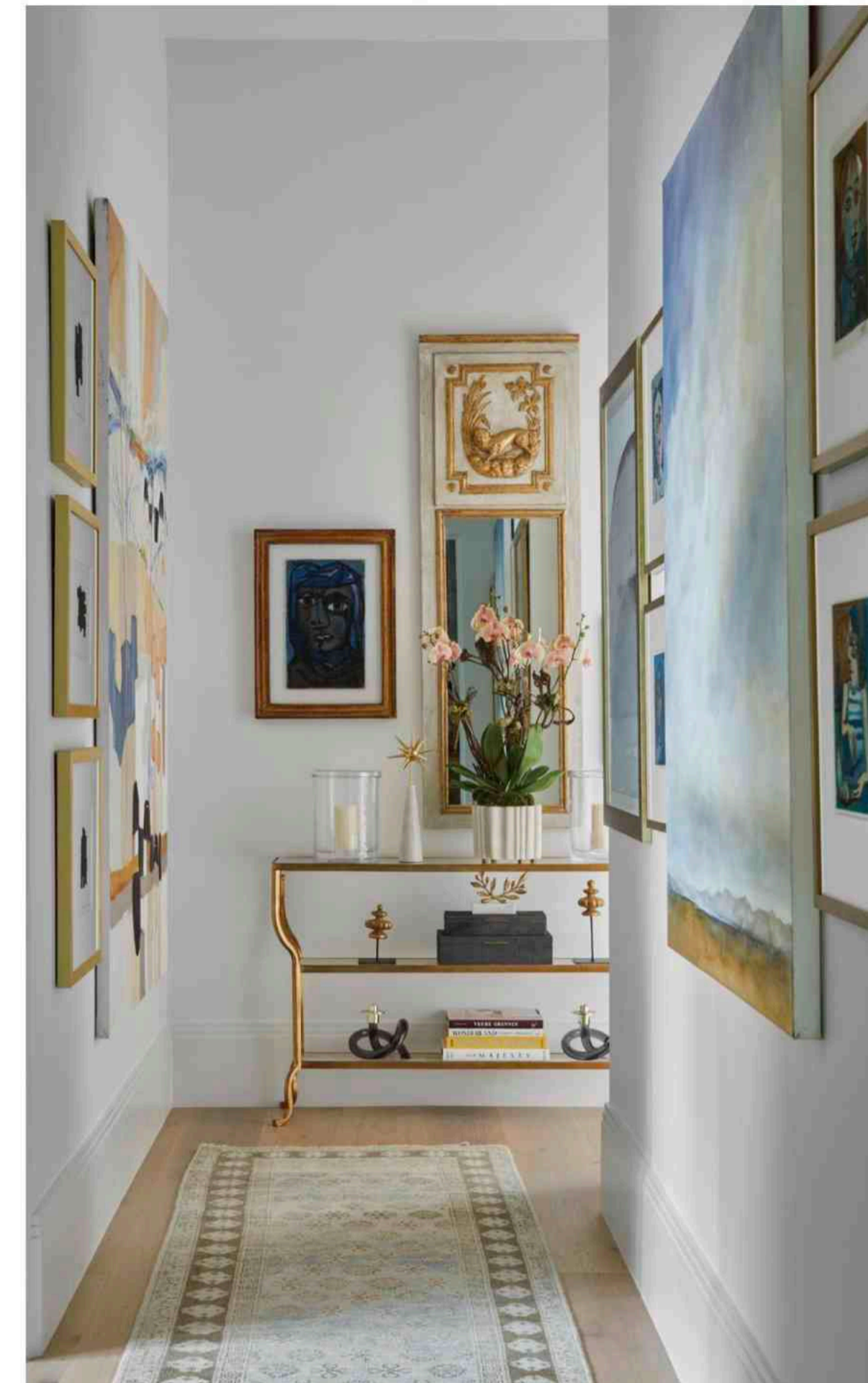


## HANDSOME DETAILS

**STUDY** *Justin Q. Williams, Trademark Design Co.*

Designed by Justin Q. Williams to be “moody enough to be a cigar lounge yet functional enough to be an everyday home office,” the study is brimming with repose and flair. Painted Sherwin-Williams Gauntlet Gray to create a luxe atmosphere, the space is enlivened with a play of pattern, including the roman shades’ serpentine markings and a geometrically patterned rug. Texture, in the form of bouclé fabrics and an armoire with a reeded front, adds interest to the space. “By adding heavy textural pieces and pattern, this space keeps the eye moving and makes the space approachable,” says Williams. Glimmering metal furniture adds sophisticated drama, including a sculptural side table, steel-and-upholstery swivel chairs, and a sleek marble desk that is anchored by a cylindrical metal form. Rounding out the dashing space are statuesque buffet lamps and a set of black stone objects shaped like diamonds. —*Jennifer Boles*

FLOORING The European Company ARMOIRE, DESK, SIDE TABLE, CHAIRS Bernhardt RUG Keivan Woven Arts LAMPS, ACCESSORIES Uttermost PAINT Sherwin-Williams Gauntlet Gray



**Bedroom** WALLCOVERING Phillip Jeffries IRONIES BRANWEN BED, AZIZA SIDE TABLE Jerry Pair BEDDING Jenny Johnson Allen Custom Linens 22x22 PILLOW Ainsworth-Noah LUMBAR PILLOW Cowtan & Tout STARBURST MIRROR The Nicholson Gallery OUSHAK RUG Designer Carpets KOLOR BROWN TABLE LAMPS, CLARA TABLE LAMPS Currey & Company LIGHT FIXTURE Made Goods VELVET BENCHES, WHITE-AND-GOLD TABLE Max & Company DOMINIC CAMEL ARMCHAIRS Worlds Away CHAIR PILLOWS Holland & Sherry FUR STOOL B.D. Jeffries WINDOW TREATMENTS Fabricated by The Drapery Room **Bathroom** CABINETRY Kingdom Woodworks COUNTERTOPS AGM Imports Granite & Marble, fabricated by A Touch of Stone, Inc. FAUCETRY PDI TILE Renaissance Tile & Bath TIDAL WEAVE WHITECAP WALLPAPER Phillip Jeffries MIRROR, ANTIQUE DRESSING BENCH Foxgloves Antiques & Galleries OUSHAK RUG Huff Harrington Home

## SUITE LIFE

### GUEST BEDROOM SUITE *Jessica Bradley, Jessica Bradley Interiors*

Step inside designer Jessica Bradley's guest bedroom suite and you're instantly enveloped in a blanket of tranquility. "We wanted this space to reflect the idea that you've entered a retreat away from the city of Atlanta," says Bradley, who designed a "serene, masculine bedroom with the sophistication of modern design but

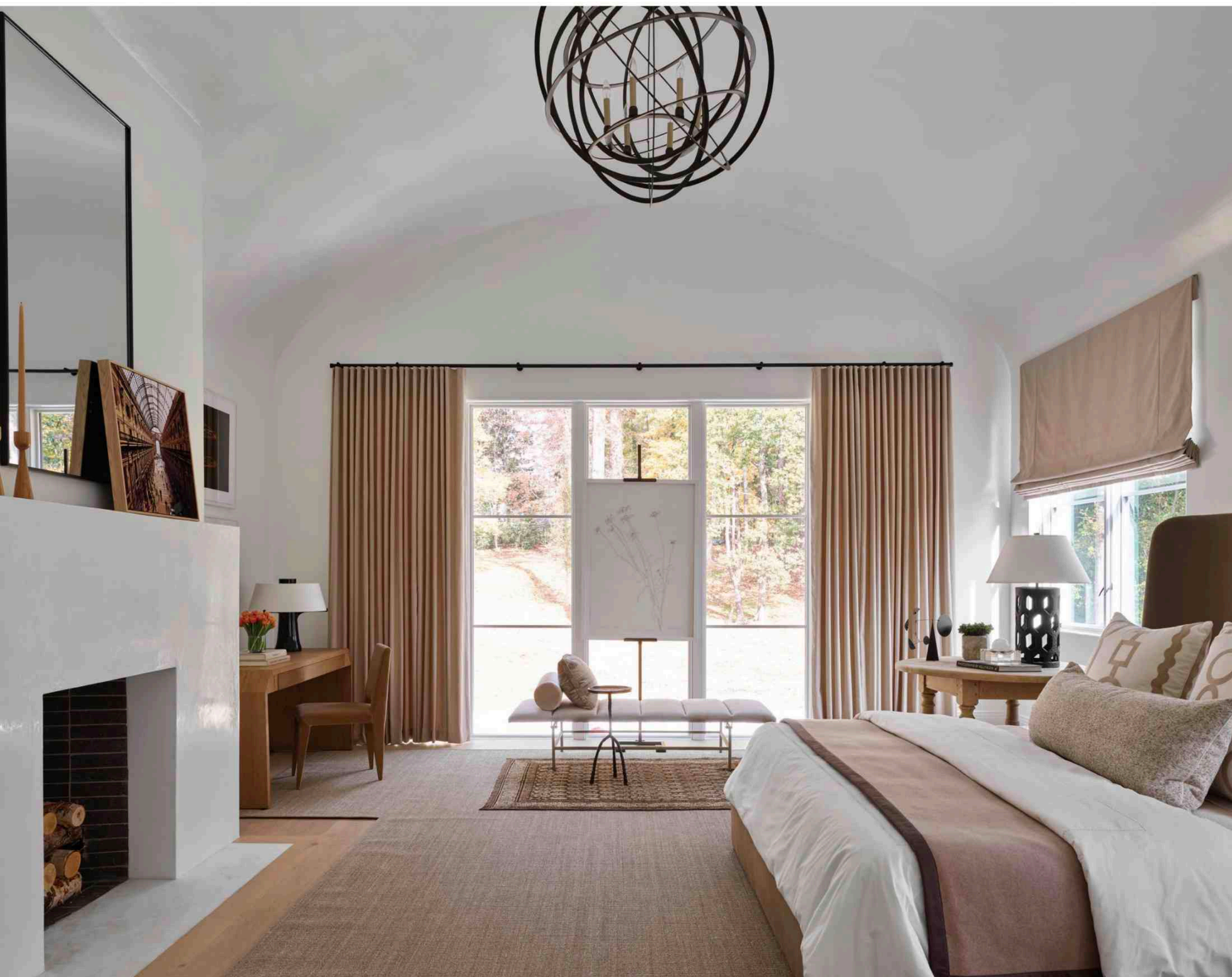
the eclectic vibe of a Paris apartment." A private entry hallway arrayed in gallery walls of original artwork welcomes visitors, and the spa-like bathroom feels plucked from a top-end hotel with geometric marble tile, a rain shower, and more abstract artwork. The bedroom beckons whoever is lucky enough to stay here, with a four-poster iron bed clad in crisp linens, a seating vignette next to expansive iron-trimmed windows, and an alluring mix of new and vintage pieces that give the room an air of history. Perhaps the star of the show? A dreamy wallcovering with a cloud-like pattern that glistens in the natural light. "It was a fun opportunity to blend antique and modern [elements] to create a space that feels fresh and aged at the same time." Mission accomplished. —*Jennifer Bradley Franklin*



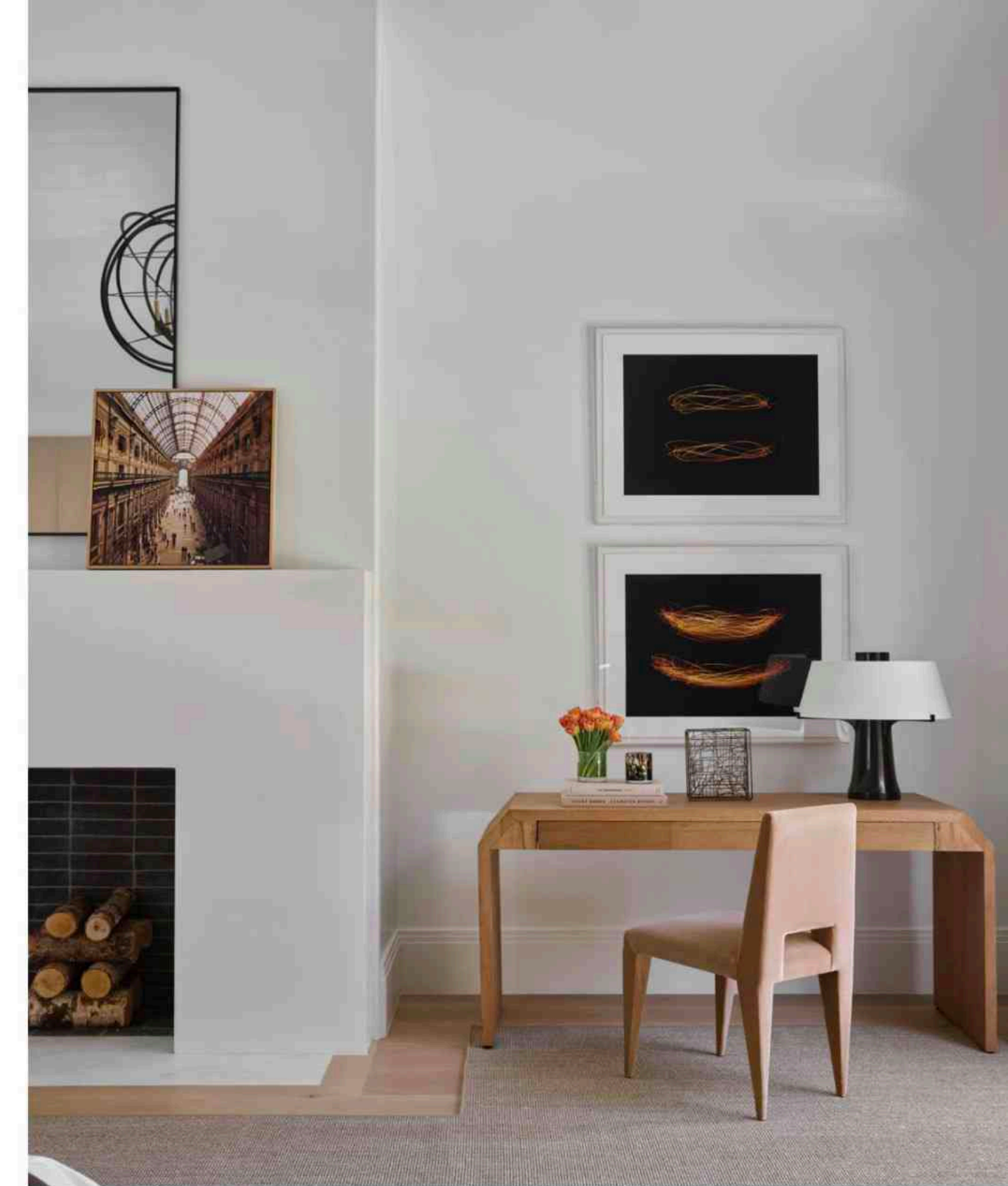
# WORK OF ART

## PRIMARY BEDROOM AND BATHROOM

*Chris Holt, Holt Interiors*



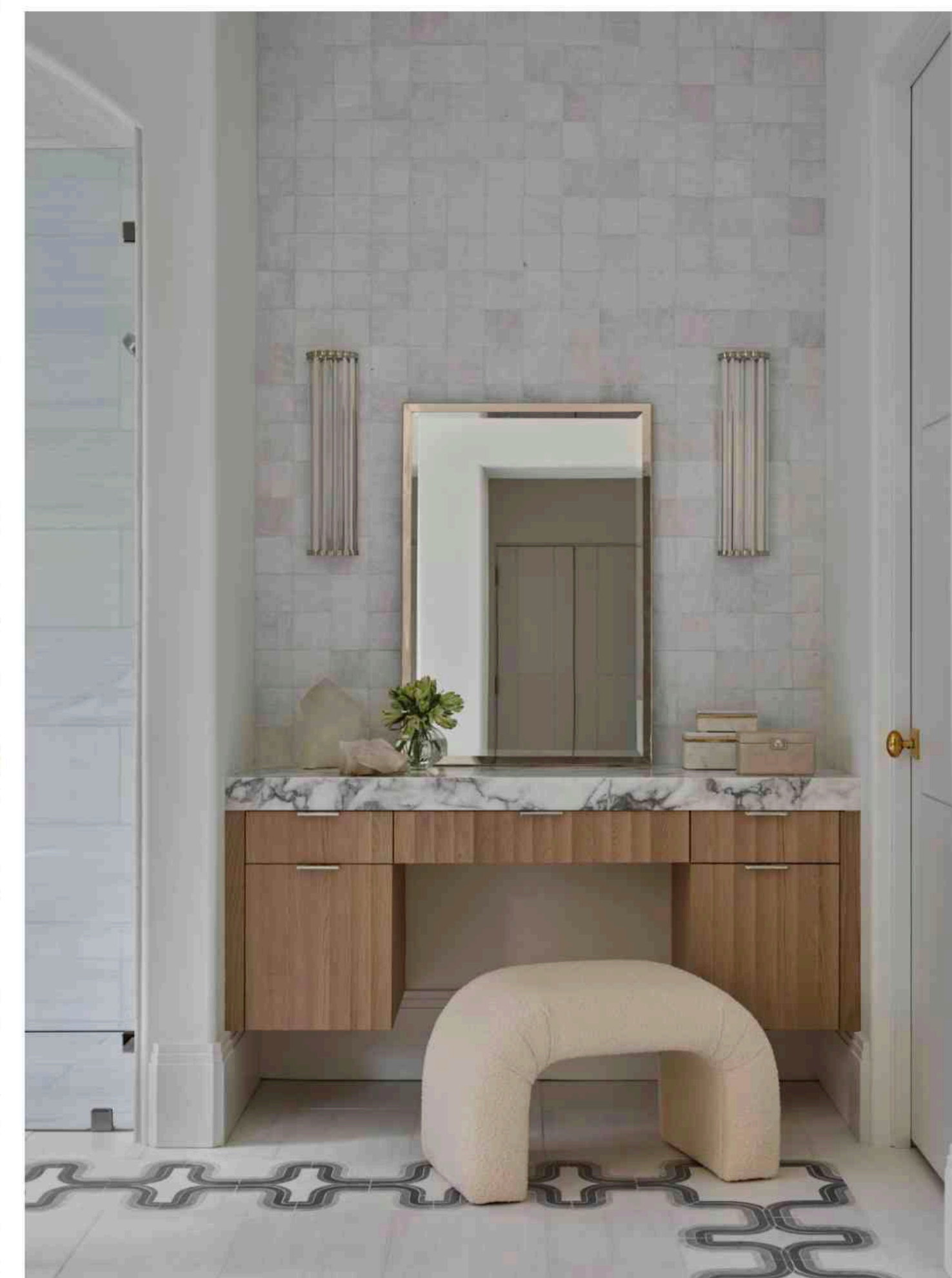
BAR PHOTO BY LAUREN CHAMBERS



With an airy, modern design aesthetic woven throughout the showhouse, designer Chris Holt knew he wanted to echo that sentiment when designing the primary bedroom and bathroom. "I wanted my design to connect to that, and I viewed the space as a blank canvas for layering in sophisticated patterns, varying neutral hues, and lots of dynamic textures," he says. The primary bedroom is commanding in both its size and architectural details, which include expansive windows, a barrel-vaulted ceiling and a cozy fireplace. "I wanted to create a design that quietly celebrated those features in an elegant, interesting way," says Holt, who painted the walls and ceiling in a high-gloss paint to create a subtle reflection. "It's so pretty at night with the soft, warm lighting. In the daytime, the flood of natural light through the windows gives you a bit of a treehouse effect." Varying textures in the form of rugs, drapery, and upholstered furnishings keep the overall neutral scheme from skewing flat. Likewise, the designer allowed the primary bath's cabinetry by Kingdom Woodworks and graphic tile to take center stage. "Our approach to the bath was similar to that of the bedroom in that we wanted to play off the light, natural California feel," says Holt, who injected subtle moments of charm with woven drapery, an antique rug, and a mirrored art installation. Right outside, a bar area allows the future homeowners to enjoy a nightcap from the comfort of bed. — *Claire Ruhlin*



**Bathroom** CABINETRY Kingdom Woodworks COUNTERTOPS AGM Imports Granite & Marble, fabricated by A Touch of Stone, Inc. TILE Renaissance Tile & Bath FAUCETRY PDI TUB Hydro Systems ANTIQUE RUG Keivan Woven Arts WALLPAPER Schumacher SIDE TABLE Noah J. & Co **Bedroom, Previous Spread** FLOORING The European Company RUG Myers Carpet ARTWORK Through Noah J. & Co., Natural Curiosities, Spalding Nix Fine Art BED Bernhardt CUSTOM BOLSTER BED PILLOW, RECTANGULAR MIRROR, HEXAGON TABLE LAMP, ROUND BLEACHED OAK TABLE, LOW WOOD TABLE, DESK Noah J. & Co. DESK CHAIR Crate & Barrel CASHMERE BLANKET Maison Cashmere CUSTOM BENCH CUSHION FABRIC Romo BED PILLOW FABRIC Pierre Frey METAL DRINK TABLE Made Goods. **Bar, Previous Spread** CABINETRY Kingdom Woodworks COUNTERTOPS MSI, fabricated by A Touch of Stone, Inc. FAUCETRY PDI

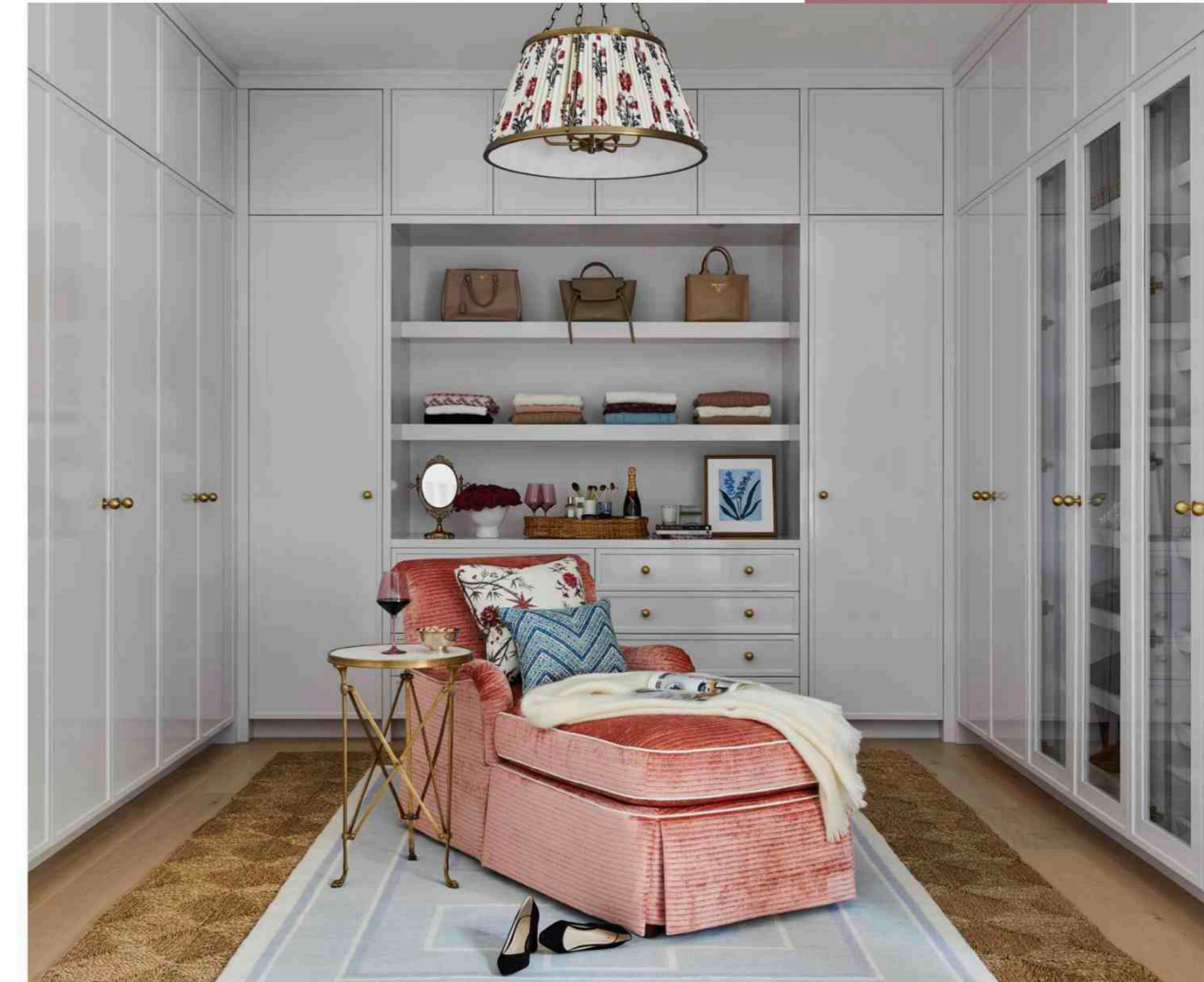




**Her Closet** CABINETRY Bell Cabinetry & Design  
 FLOORING The European Company STRIPED WALLS Hayden Paints  
 LARGES GILTWOOD MIRROR, ANTIQUE FOOTSTOOL, BLUE-AND-WHITE PLATTER, OIL-ON-CANVAS FLORAL PAINTINGS William Word  
 Fine Antiques ANTIQUE DRESSING MIRROR Chairish MODERN OUSHAK RUG Locust Lane SISAL RUG Rush House CLOTHING AND ACCESSORIES Willow Park Boutique  
**His Closet** CABINETRY Bell Cabinetry & Design  
 FLOORING The European Company ARTWORK ON BACK WALL Caleb Mahoney through Gregg Irby Gallery PERSIAN RUNNER ABN Rug Gallery UPHOLSTERED THREE-LEG CHAIR Bradley CLOTHING AND ACCESSORIES Onward Reserve

**YIN & YANG** PRIMARY HIS-AND-HER CLOSETS *Bailey Ward, Bailey Ward Interiors*

Designer Bailey Ward created personality-packed retreats in her his-and-her closet designs. Pierre Frey's Le Grand Genois Rayure 4 Chemins fabric—which Ward used in a roman shade and accent pillow—served as the basis of the design for her closet. "I love the femininity and the rich jewel tones and carried that throughout the space," explains Ward. "I wanted the space to feel classic and sophisticated while also tapping into a little bit of glam and fun with the velvet channeled chaise and bolder accessories." Blue striped walls, painted by Hayden Paints, complement the fabric's color scheme without distracting from it, while antiques and sizable built-ins create a posh environment that doubles as a hangout spot. For his closet, Ward nodded to her love for the sea with a striped roman shade and nautical-inspired gallery wall that pops against midnight blue walls and custom closets. — Claire Ruhlin





FLOORING The European Company  
 UPHOLSTERY, CURTAIN FABRIC, PAGODA  
 MIRROR Schumacher TABLE LAMPS Bunny  
 Williams Home ANTIQUE FURNITURE  
 Loft Antiques SISAL RUG Myers Carpet  
 ARTWORK Through Gregg Irby Gallery  
 CERAMICS Tang Dynasty Design Center

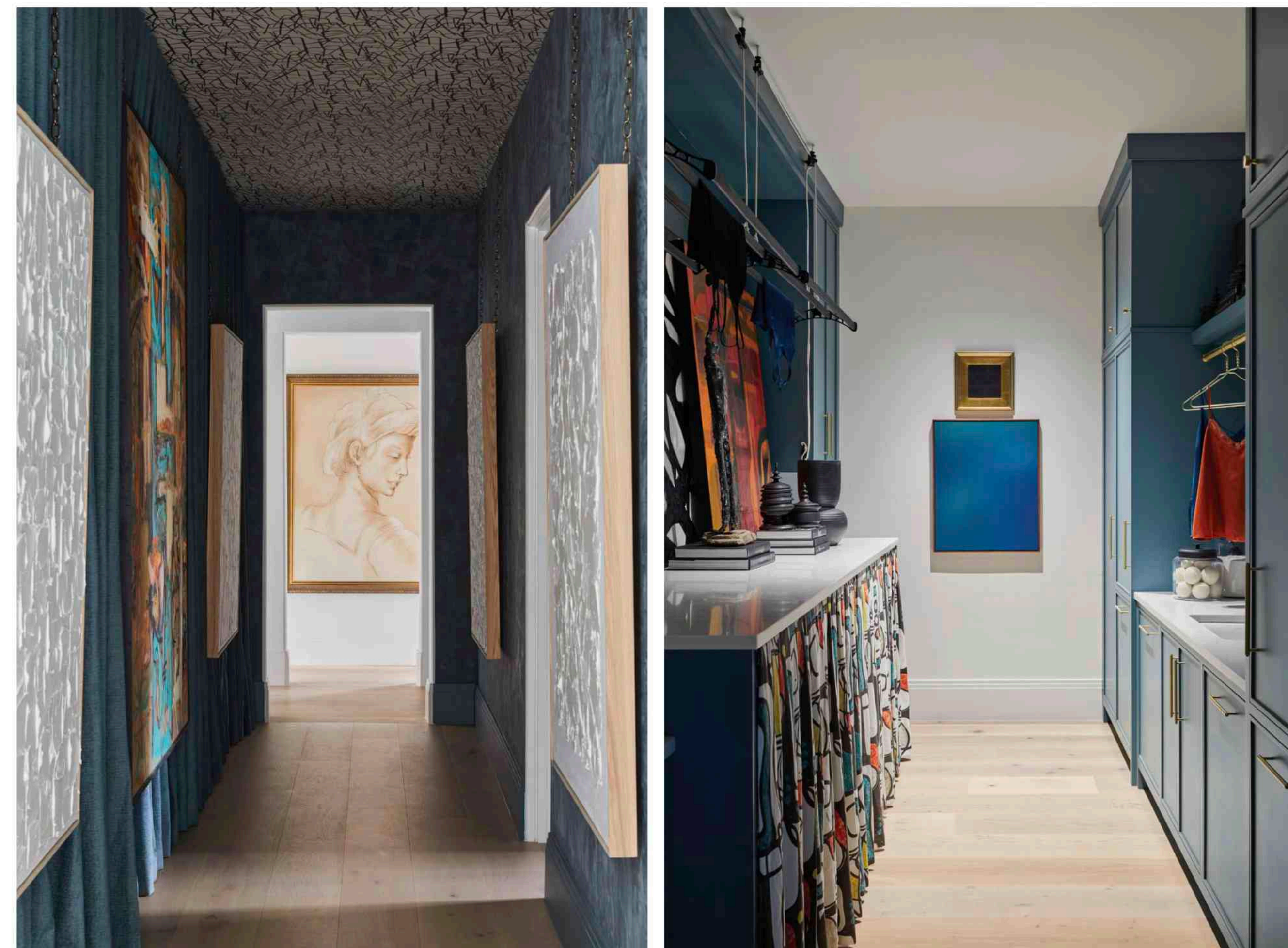


chairs. Another time-honored detail is the blue-and-white ceramics amply displayed on plaster built-in shelves, joined by red leather books for a splash of contrasting color. Choosing to leave the walls white, the designer mixed both traditional and contemporary artwork, particularly in the stair hall, where large abstract pieces are hung alongside antique oil paintings. The mix of patterned fabrics is equally lively. "The fabrics I used felt current to update the antique furniture," says Durham. "A mix of plaid, animal prints, geometric, and ikat prints are both fresh and timeless." —Jennifer Boles

## UPDATED TRADITIONS

### LIBRARY AND REAR STAIR HALL Whitney Durham, Whitney Durham Interiors

The rear stair hall and library, a space that connects the primary bedroom to the laundry room and mudroom, gave designer Whitney Durham the opportunity to "show how you can blend traditional interiors with modern architectural details." Antique furniture, placed so as not to impede foot traffic, includes a Louis XVI mahogany chest and a pair of 19th-century green chinoiserie

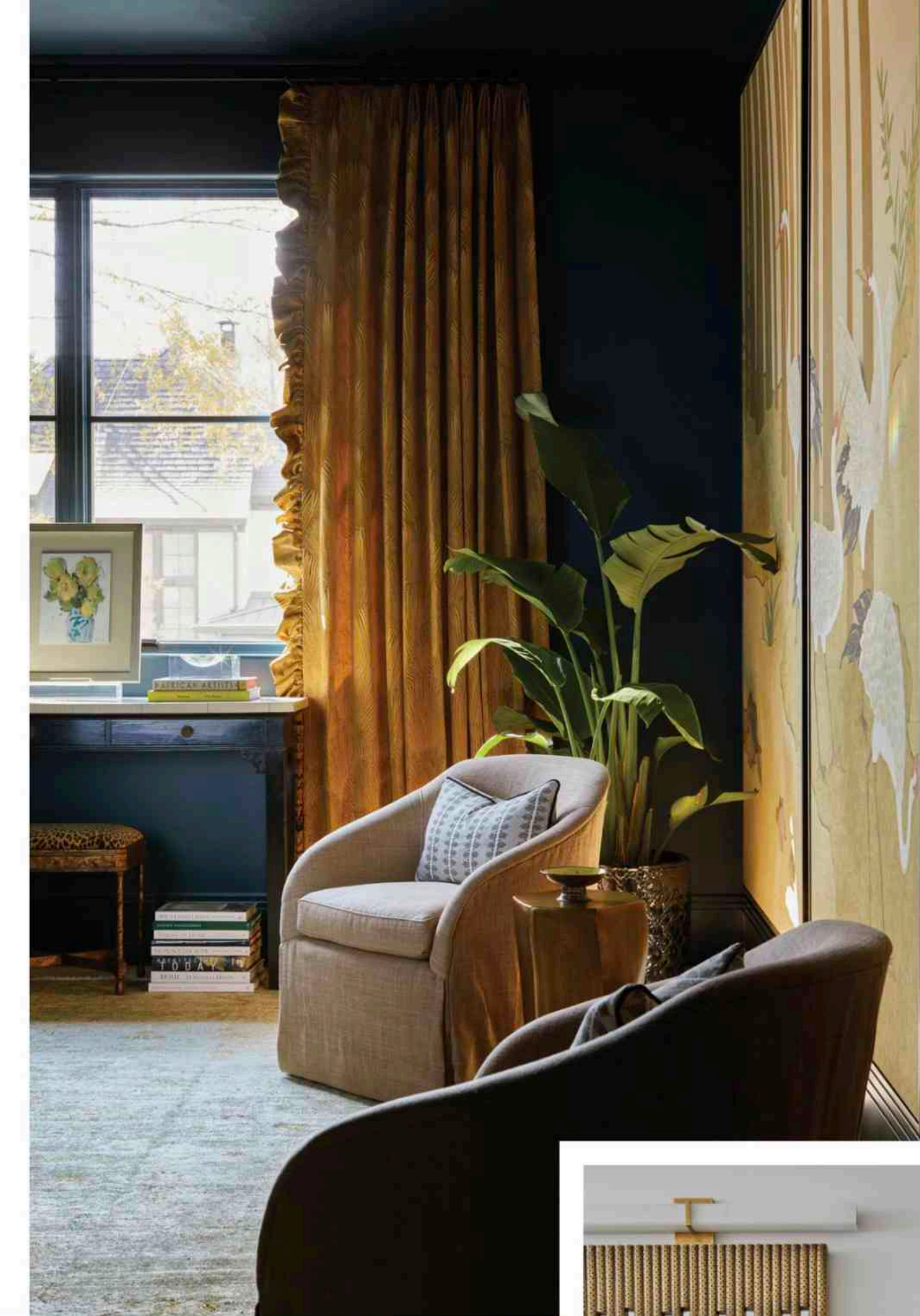


Hallway FLOORING The European Company CEILING WALLPAPER Tres Tintas ARTWORK Mike Phillips through Morningside Art WELLFLEET LIME WASH WALL Portola Paints DRAPERY WALL Kravet, fabricated by Jim Davis Designs Laundry Room CABINETRY Kingdom Woodworks COUNTERTOPS AGM Imports Granite & Marble, fabricated by A Touch of Stone, Inc. FLOORING The European Company ARTWORK Mike Phillips through Morningside Art, Neil Marshall and Phyllis Kravitz through I.D.E.A. Gallery RACK Sheila Maid Airer

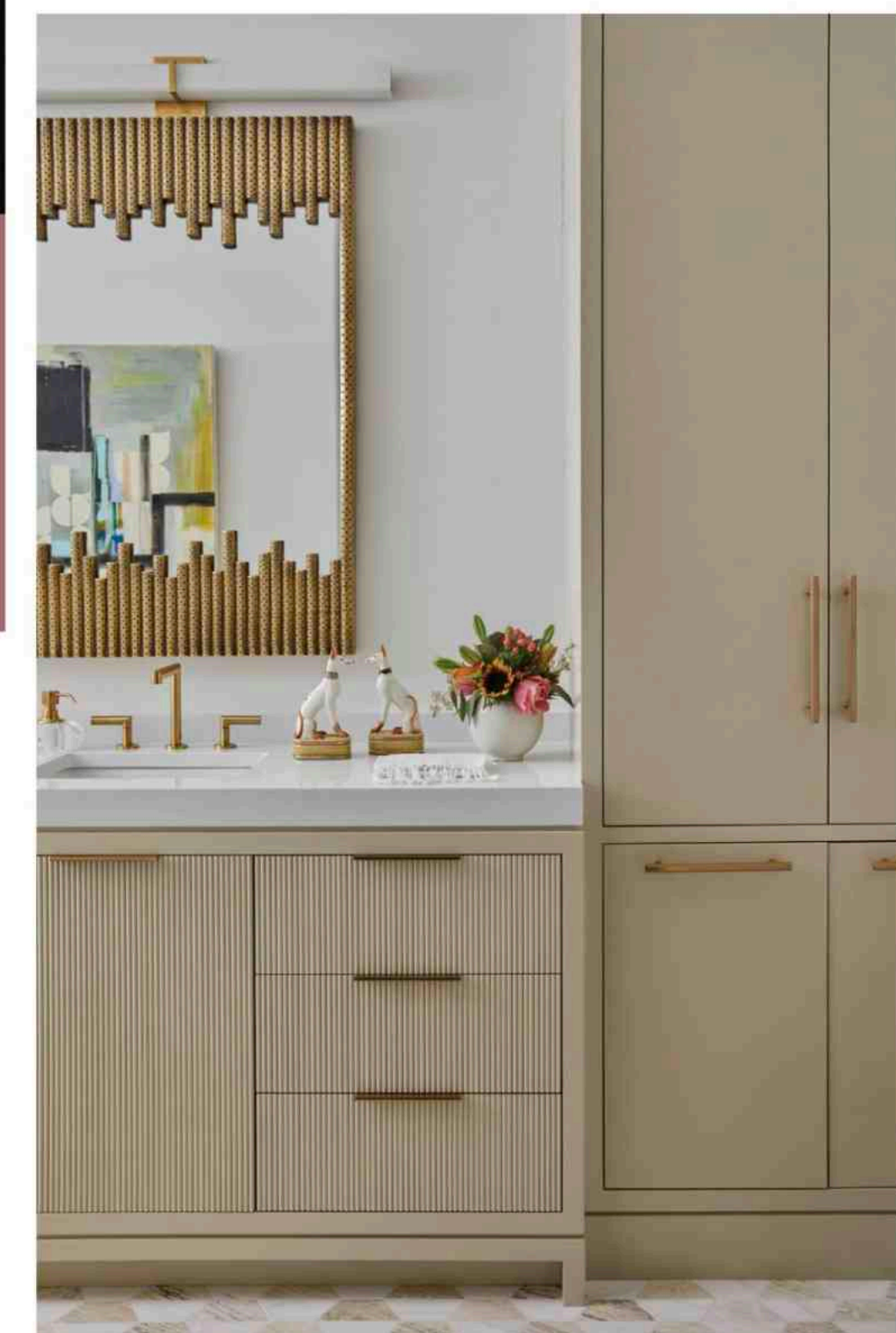
## SO FRESH

### LAUNDRY ROOM AND HALLWAY Eryn Houck, Bellwether Design & Interiors

Interior designer Eryn Houck proves that functional, connective spaces don't have to be bland. Instead of blending in, she took the opportunity to make a statement with original artwork and bold colors and textures. "Hallways are often an overlooked opportunity in our homes," she says. "They are an opportunity to express our personality and add cohesion; a hallway can offer the chance to hang art that may be a departure from the pieces in other rooms and to experiment with color." Houck created a striking backdrop for extra-large artwork with custom floor-to-ceiling draperies in the hallway and added graphic wallpaper on the ceiling to draw the eye upward. The arresting design flows through to the adjacent laundry room, where Houck commissioned custom skirts to conceal the washer and dryer and hung a pulley system to raise and lower a drying rack. Original artwork and saturated coastal teal cabinets make this a laundry room that can't be ignored. Says Houck, "These spaces that don't usually call you to linger took on a new level of interest and desirability." —Jennifer Bradley Franklin



**Bedroom** KING BED, MERRIMONT CHAIRS Wesley Hall BEDDING Graccioza FRAMED YASHINOKI CRANE GOLD PANEL WALLPAPER MURAL Schumacher PAIR OF ITALIAN INLAID THREE-DRAWER COMMODES Foxglove Antiques & Galleries AFGHANISTAN WOOL RUG, TURKEY WOOL RUG Keivan Woven Arts ACRYLIC ARTWORK EASEL, BRASS ACCENT TABLE, 1768 WEDDING CHAIR, CONSOLE TOP TABLE Huff Harrington Home **Bathroom** CABINETRY Kingdom Woodworks COUNTERTOPS AGM Imports Granite & Marble, fabricated by A Touch of Stone, Inc. TILE Renaissance Tile & Bath FAUCETRY PDI



# ESCAPE THE ORDINARY

**BEDROOM & BATHROOM**  
*Michele Gratch, Michele Gratch Interiors*

An upcoming trip to Paris inspired interior designer Michele Gratch to create this inviting suite that evokes the feeling of staying in an elegant European boutique hotel. She created a rich backdrop with a coat of Farrow & Ball Hague Blue paint and dialed up the drama with framed Schumacher wallpaper panels in an elegant crane motif. An inviting upholstered king-size bed is clad with plush, crisp white linens and a variety of pillows, lit overhead by a showstopping chandelier in a gold leaf

motif. Gratch cleverly mixed old and new elements by flanking the bed with a pair of antique Italian inlaid chests that double as storage and bedside tables. "I wanted it to feel special but not fussy," says Gratch. "I tried to mix masculine and feminine elements so that anyone who slept here would feel comfortable." No stay in a five-star hotel would be complete without a sumptuous bathroom. Gratch wanted it to feel like an extension of the bedroom, using vibrant art and an interesting mirror to accomplish a cohesive effect. —Jennifer Bradley Franklin



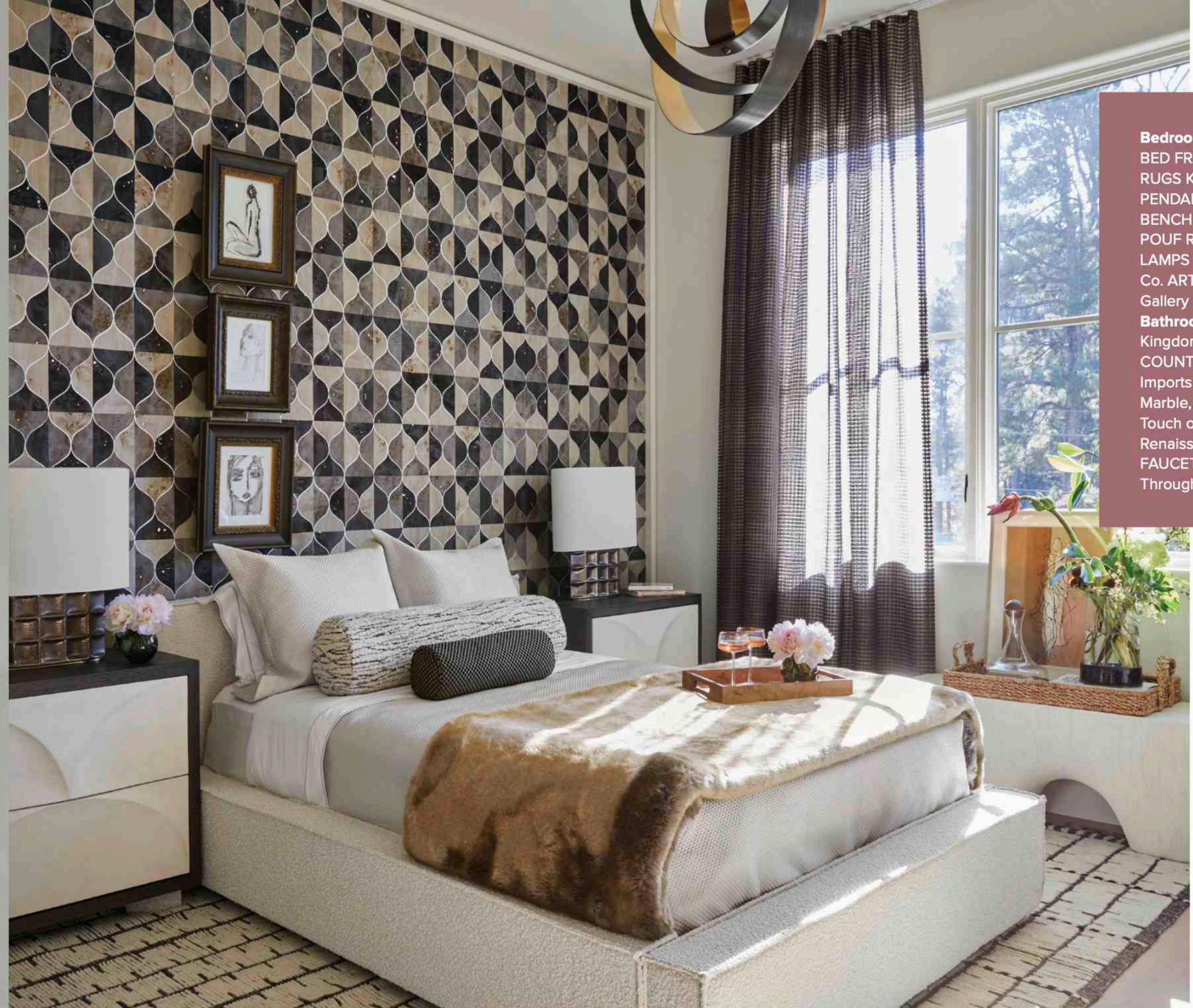
**Bedroom** HAMPTON EXTRA-LARGE CHANDELIER, HACKNEY BRIDGE ARM FLOOR LAMP Visual Comfort & Co. CUSTOM SISAL Myers Carpet IVORY BOUCLÉ CHAIRS Lee Industries OUSHAK RUG Locust Lane Rugs PEONY 3D ARTWORK EV Designs CUSTOM ABSTRACT ARTWORK Lindsay Von Art ANTIQUE HERONS Jerry Pair LAVENDER WOOL THROW BLANKET Gramercy LAVENDER BOTANICALS Vickey Sides Art WINDOW TREATMENTS, PILLOWS, CRIB BEDSKIRT Schumacher  
**Bathroom** CABINETRY Kingdom Woodworks COUNTERTOPS AGM Imports Granite & Marble, fabricated by A Touch of Stone, Inc. TILE Renaissance Tile & Bath FAUCETRY PDI



# LUXURY LULLABY

**BEDROOM & BATHROOM**  
*Kristan Moore, Kristan & Co.*

Featuring a soft lavender palette with delicate design details, interior designer Kristan Moore was inspired to create a luxe nursery with unexpected touches that blended modern and whimsical. “We chose the color scheme to tie into the bathroom tile and the California modern style of the entire home. We felt that the lavender was a modern take on the classic pink and white,” she says. “We also wanted this room to be warm, welcoming, and livable.” To accomplish those objectives, she chose the extra-large Hampton chandelier and tone-on-tone molding to close the distance between the child-sized furnishings and the 10-foot ceiling. Large windows flood the room with natural light, while floor-to-ceiling custom window panels in Schumacher Lotus Garden fabric, layered sisal and Oushak rugs, and a seating area with plush armchairs create a cozy feel for a resident of any age. Asks Moore, “What better way to celebrate the season than through the eyes of a child?” The answer can be found in her charming nursery. —Jennifer Bradley Franklin



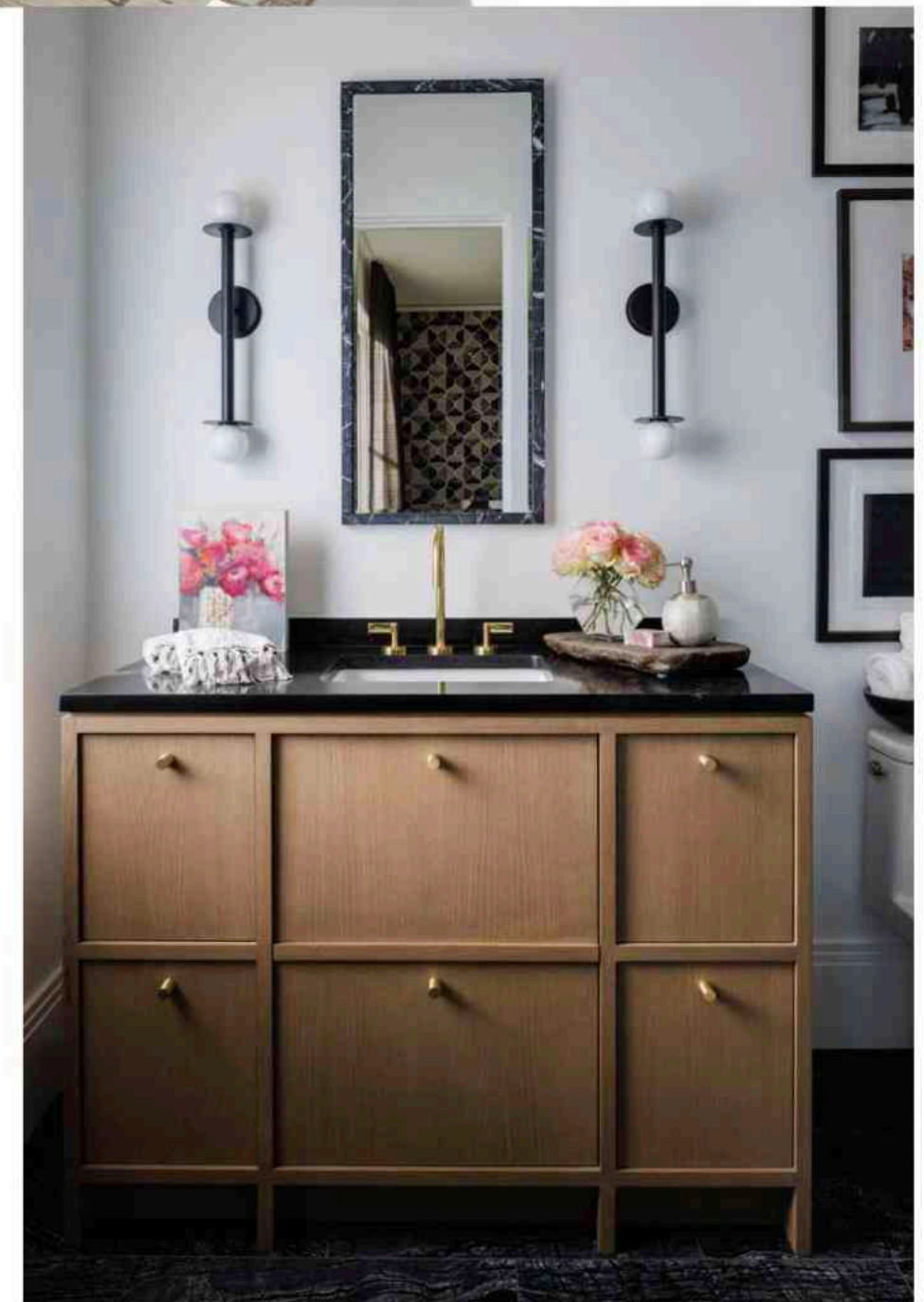
**Bedroom** UPHOLSTERED  
 BED FRAME Rove Concepts  
 RUGS Keivan Woven Arts  
 PENDANT LIGHT Paul +  
 BENCH Palecek WOVEN  
 POUF R Hughes BRONZE  
 LAMPS Visual Comfort &  
 Co. ARTWORK Through dk  
 Gallery and TEW Galleries  
**Bathroom** CABINETRY  
 Kingdom Woodworks  
 COUNTERTOPS AGM  
 Imports Granite &  
 Marble, fabricated by A  
 Touch of Stone, Inc. TILE  
 Renaissance Tile & Bath  
 FAUCETRY PDI ARTWORK  
 Through dk Gallery

## PATTERN PLAY

**BEDROOM AND BATHROOM**  
*Lorraine Enwright, Intuitive Dwellings  
 by Enwright Design Collaborative Inc.*

Taking cues from the bath's black marble and tile, Lorraine Enwright embraced moody colors and dramatic contrast in her guest suite. An eye-catching wood veneer wallcovering makes a statement behind the bed, while touches of blush pink, natural textures, and figurative artworks provide balance in both the bedroom and bath. "We wanted the wallpaper to stand out as the star of the room, so all other design decisions were made to complement the natural veneers in the pattern with ebony, charcoal, and natural oak coloration," explains Enwright. Above the bed, three framed sketches—hung vertically from the ceiling so as not to puncture the wallpaper—add subtle softness. A custom bronze wood finish on the nightstand's waterfall top contrasts with the white bouclé bed frame. Says Enwright, "We wanted to tell the story of a reflective retreat that considers our many faces: drama, passion, softness, intellect, and introspection." —*Claire Ruhlin*

BATHROOM BY LAUREN CHAMBERS

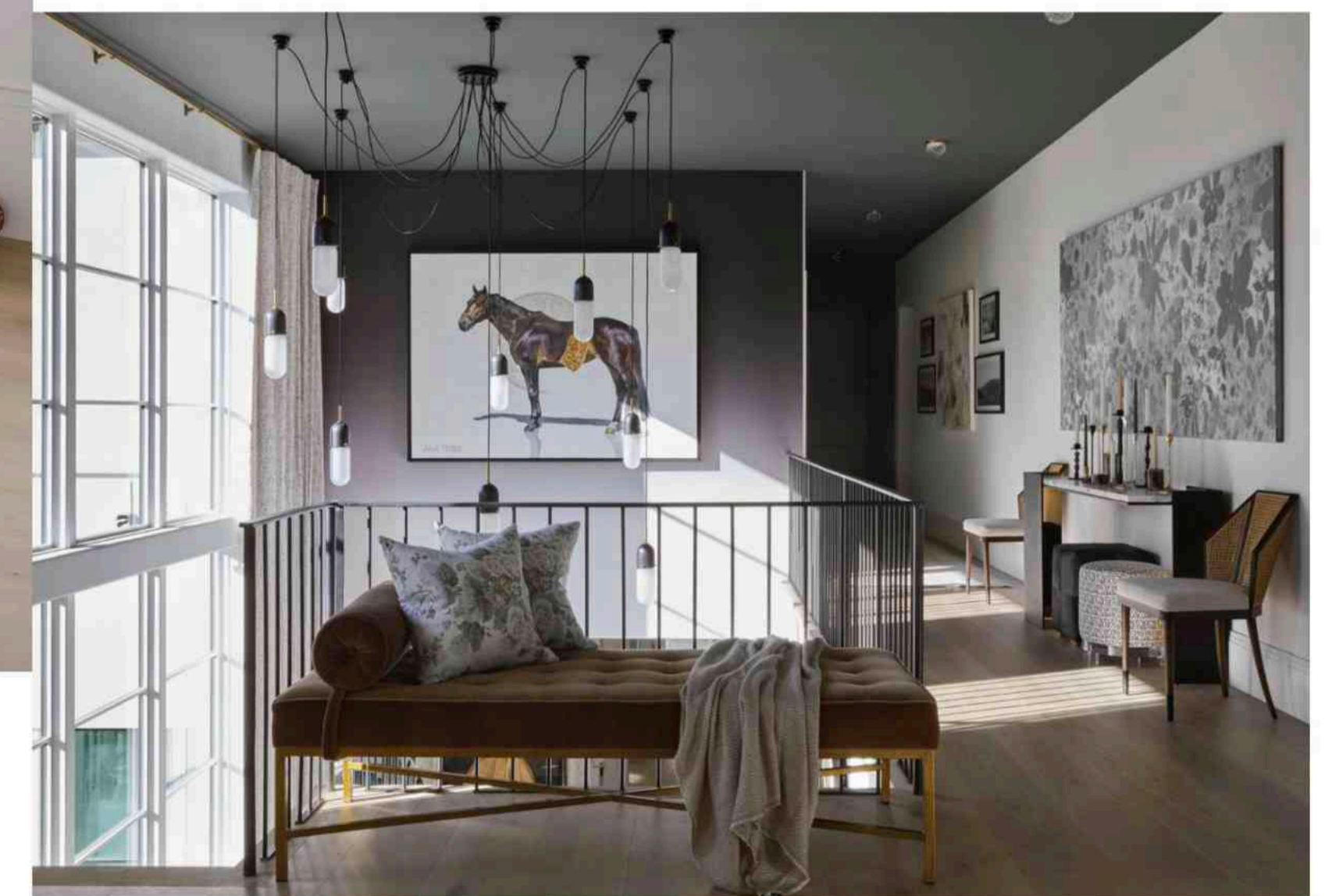




# STUDY IN OPPOSITES

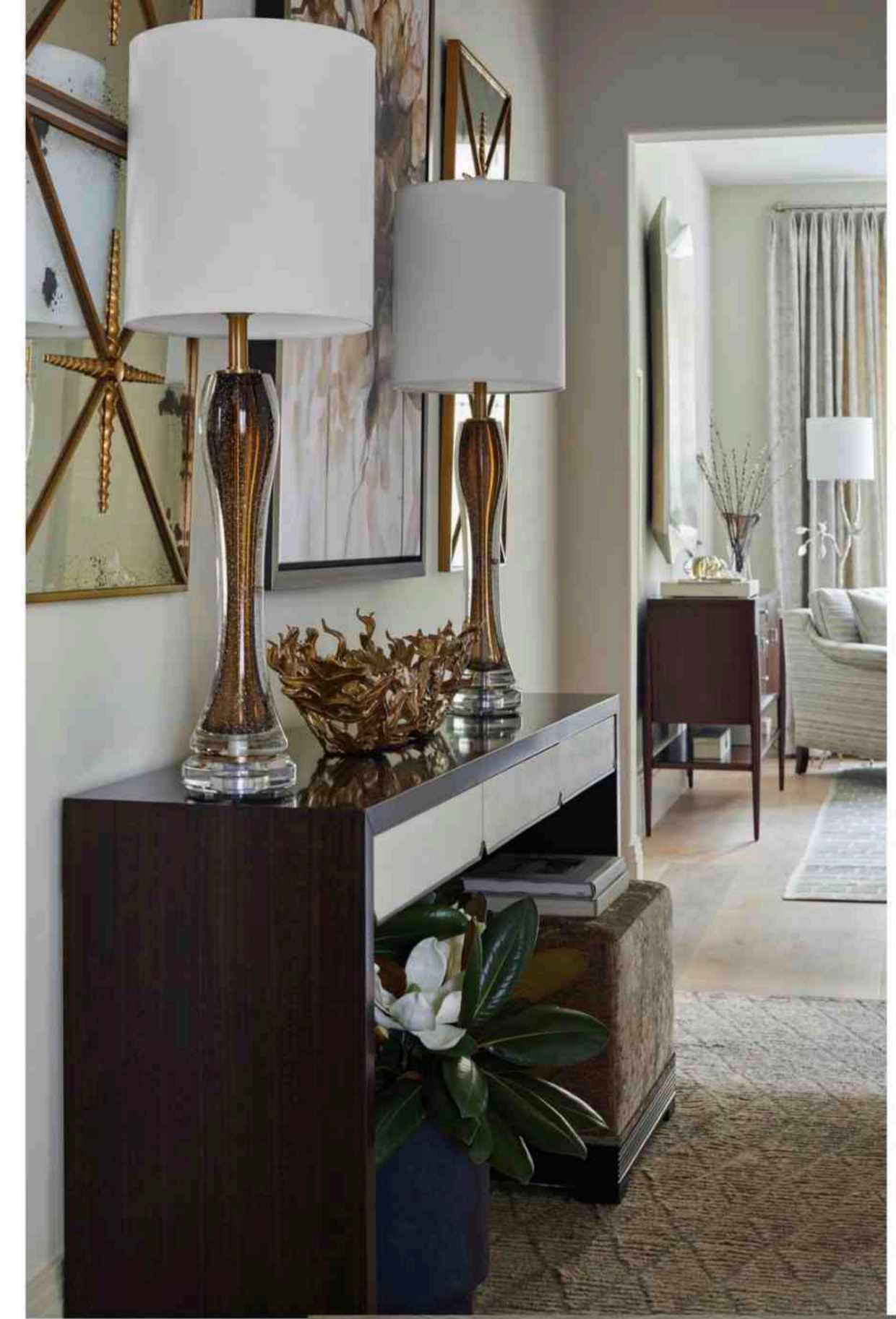
**SITTING ROOM AND HALLWAY**  
*Christy Dillard Kratzer, CDK Interior Design*

Interior designer Christy Dillard Kratzer shows off her talent of creating harmony between what might seem to be disparate elements in the upstairs sitting room and hallway. Inspired by the home's clean architectural lines, which incorporate steel and glass as well as rolled corners, she included what could be considered both masculine and feminine elements. Bold equestrian artwork, dark, textured ombré wallpaper, and a flowing bronze chandelier pair flawlessly with softer elements such as sheer, light-filtering draperies, a vintage French antique mirror, and textured upholstery in velvet and bouclé. The Atlanta-based designer envisioned this space overlooking the home's main entryway as a gathering spot, either for a morning cup of coffee or an evening cocktail, facilitated by curvaceous furniture arranged to encourage conversation. Says the designer, "This is a space that can be enjoyed by all, whether that's the family that lives in the house or the guests visiting and staying." —Jennifer Bradley Franklin

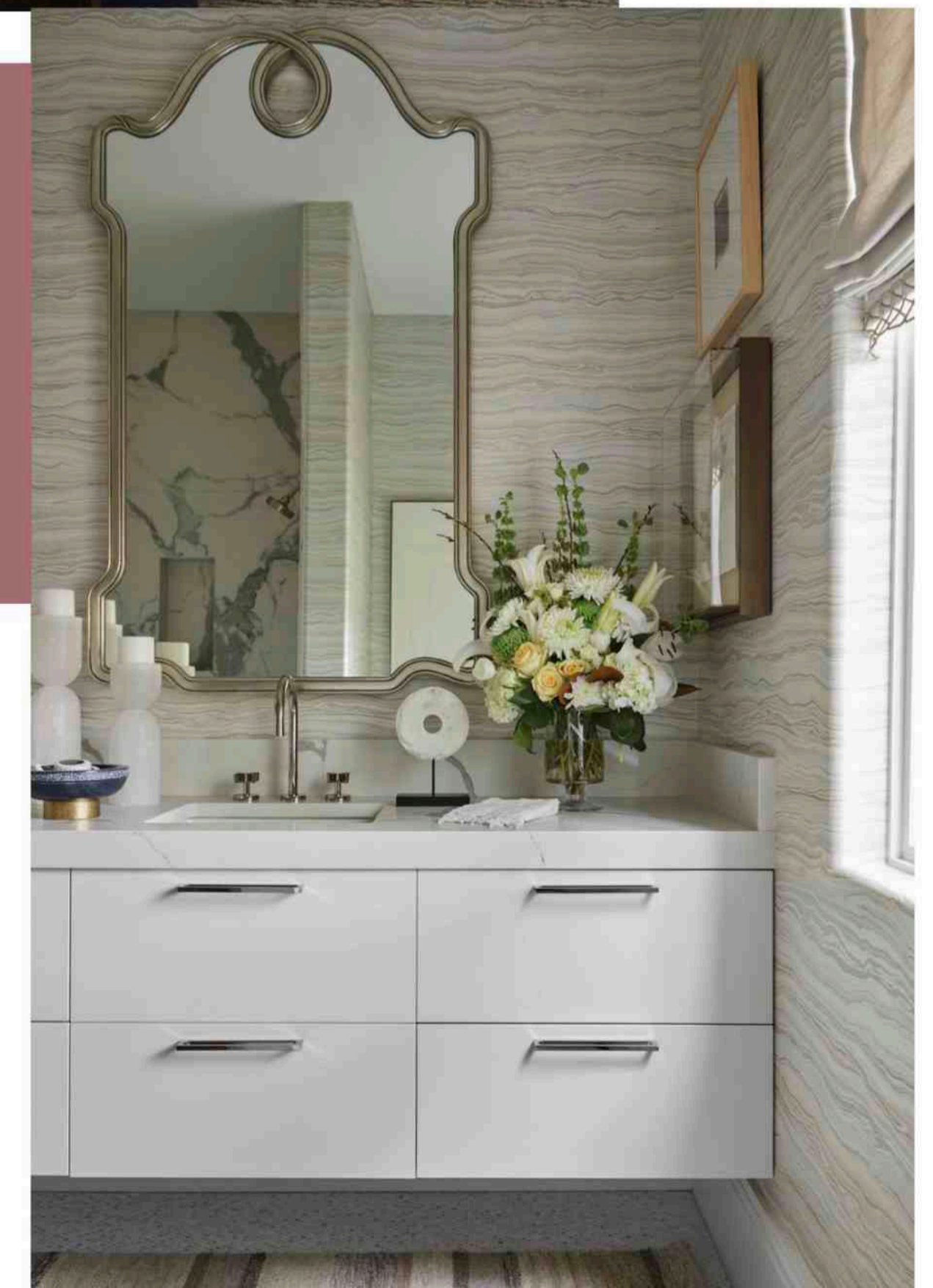


FLOORING The European Company SPEAKERS GHT Group ARTWORK Julie Ferris, Carlyle Wolfe Lee, and Chris Little through Spalding Nix Fine Art, Augusta Wilson through Tritter Feefer ANTIQUE MIRROR English Accent Antiques INLAY WOOD BENCH, ROUND BLACK TABLE Mathews Furniture + Design LARGE BLACK VASE, BLACK SCULPTURE, AGATE BOWL, PILLOWS Galbraith & Paul ORSAY FLOOR LAMPS Visual Comfort & Co. MOHAIR DAYBED UpCountry Home HALLIE COFFEE TABLE Made Goods CONSOLE Baker BALL PILLOW Schumacher RUG Designer Carpets





**Bedroom** LIGHTING, FURNITURE, ACCESSORIES, ARTWORK Ansley Interiors Furniture and Design WALLCOVERING Phillip Jeffries RUGS Keivan Woven Arts **Bathroom** CABINETRY Kingdom Woodworks COUNTERTOPS AGM Imports Granite & Marble, fabricated by A Touch of Stone, Inc. TILE Renaissance Tile & Bath FAUCETRY PDI WALLCOVERING Thibaut



# PRIVATE RETREAT

**BEDROOM AND BATHROOM**  
*Shane Evans and Deena Levine,*  
*Ansley Interiors Furniture and Design*

Because this bedroom suite was situated on the opposite side of the house from the rest of the upstairs bedrooms, Shane Evans and Deena Levine envisioned a tranquil guest retreat, using Phillip Jeffries Haiku wallpaper as their focal point. “The neutral tones of the wallpaper immediately caught our attention,” says Evans. “We aimed to fashion an environment that exuded tranquility and serenity, striking a balance that was neither overly masculine nor excessively feminine in style.” Whimsical touches—such as a tree-shaped

floor lamp and a silver-leaf mirror—complement the wallpaper, while layers of texture in the room and entry hall add depth and warmth. In the bathroom, the designers drew inspiration from the shower walls’ porcelain veining and selected Thibaut’s Treviso Marble wallpaper to “emulate marble’s genuine tones and shading,” says Levine. “The subtle hues and shading in the bathroom wallpaper resonate with the soft tones employed in the bedroom wallpaper, creating a cohesive and interconnected aesthetic.” —*Claire Ruhlin*

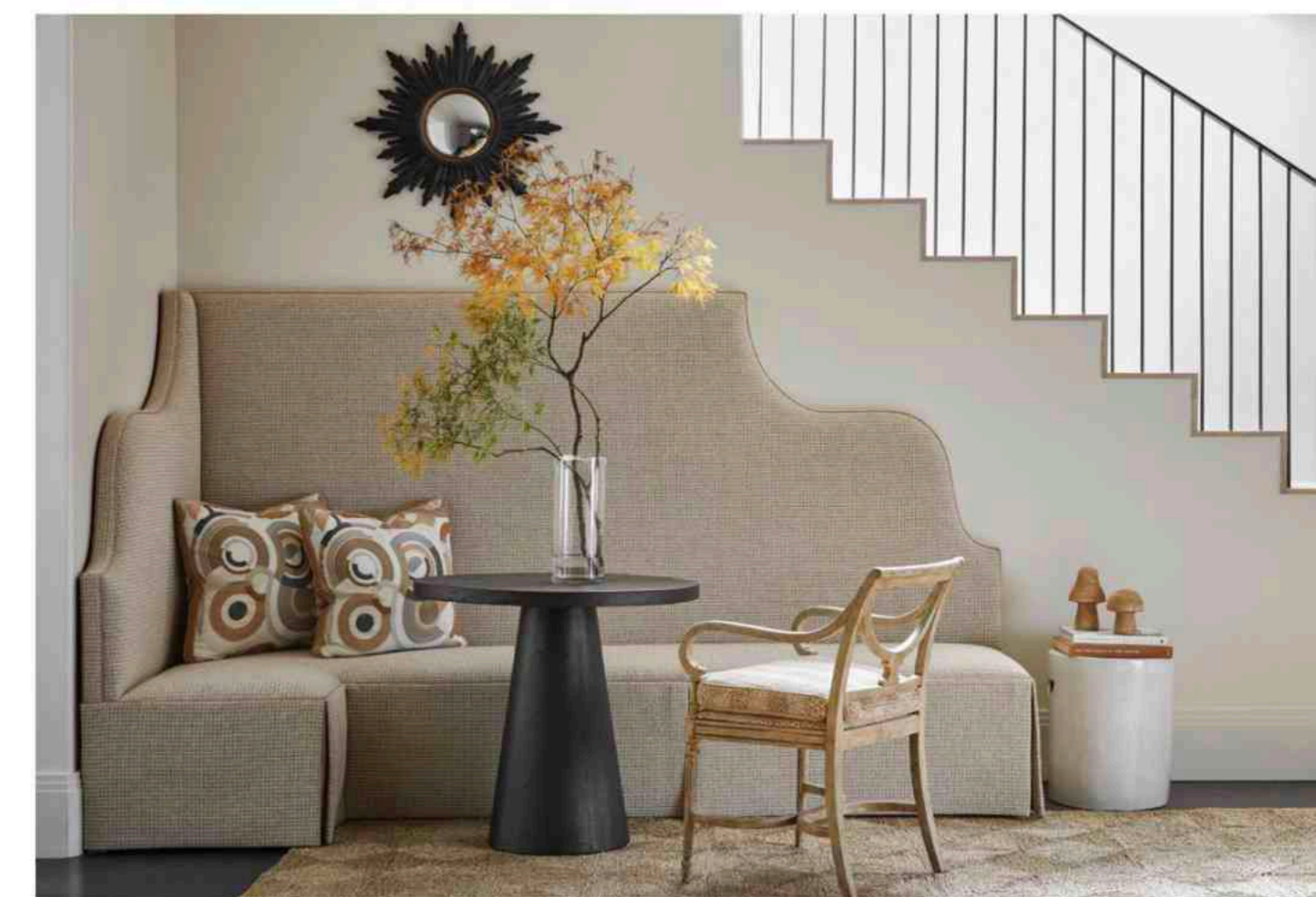
CABINETS  
 Kingdom Woodworks  
 COUNTERTOPS AGM  
 Imports Granite &  
 Marble, fabricated by  
 A Touch of Stone, Inc.  
 BANQUETTE, THROW  
 PILLOW, DINING BENCH,  
 COUNTER STOOL  
 FABRICS Larsen CLUB  
 CHAIR, COFFEE TABLE  
 Mrs. Howard SOFA,  
 COUNTER STOOLS  
 Lee Industries BLACK  
 MIRROR Acquisitions  
 Atlanta FRAMED  
 BOTANICALS Barrett  
 Ervin HANGING SHADE  
 Lamp Arts RUG Rush  
 House

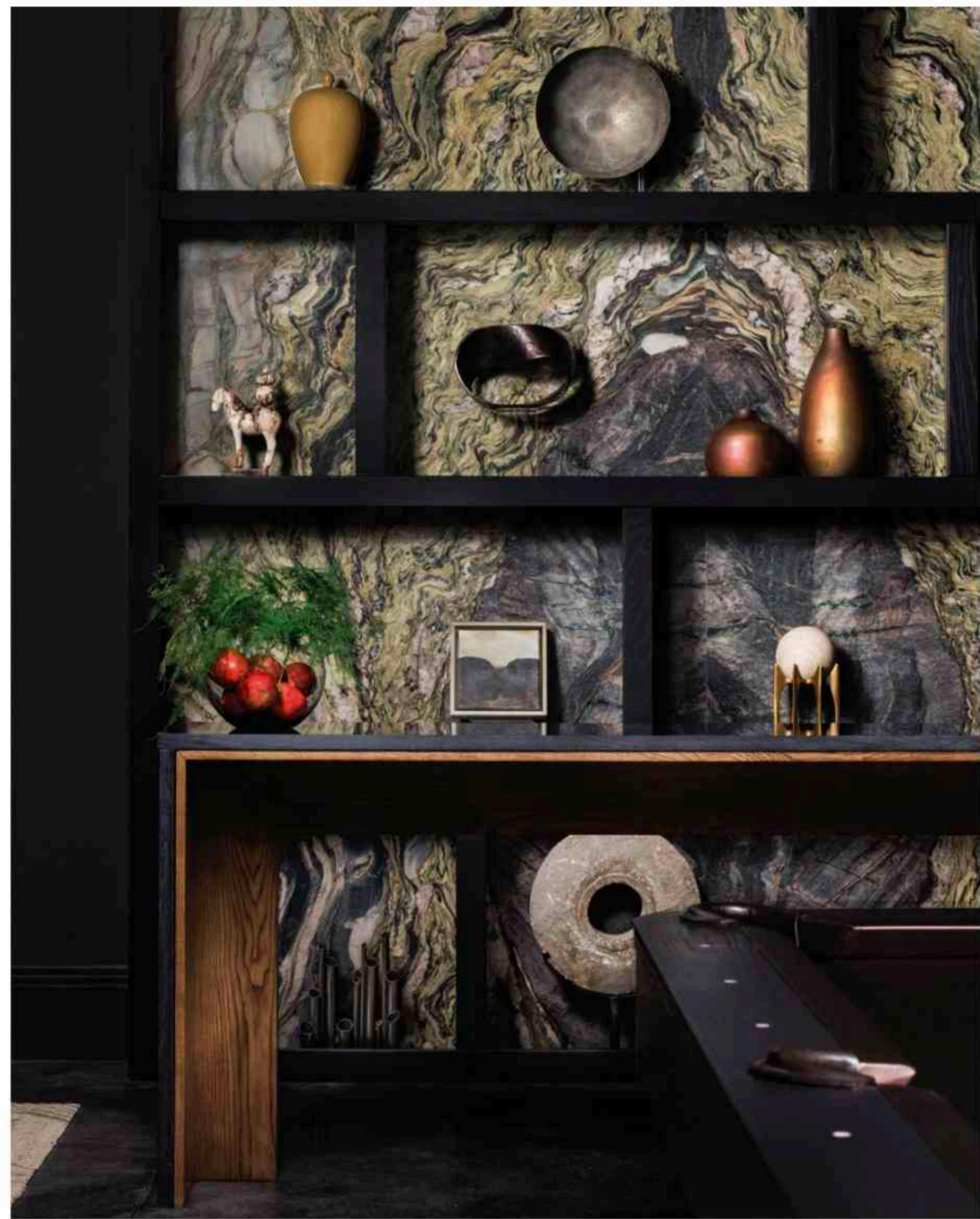


## MOD MOMENT

**LOUNGE AND WINE ROOM**  
*Emi Mason and Ashley Potts,  
 Potts Mason Interiors*

A space designed for any number of functions—designers Emi Mason and Ashley Potts foresee cocktail parties, wine tastings, or quiet family nights—the terrace-level lounge and wine room reflects both the home’s modern architecture and its classic Southern setting. “We played into the contemporary vibes with clean lines, warm textures, and neutral color palette and brought in antiques and more traditional upholstery to balance the space,” says Mason. Larsen’s Art Deco-patterned Malabo fabric, used for throw pillows and some chairs, was the room’s starting point, introducing an array of warm tones that are repeated in upholstery fabrics, an antique bleached-oak commode, and a patterned sisal rug. The lounge’s spacious size not only allowed the designers to create multiple seating areas, but it also gave them room to add a few dramatically scaled pieces, particularly a shapely corner banquette and a shaded pendant light that hangs above a dining table and upholstered benches. Enhancing the entertaining experience, a wine room surrounded by built-in cabinetry and a sizable island with waterfall stone top makes hosting a breeze. —*Jennifer Boles*





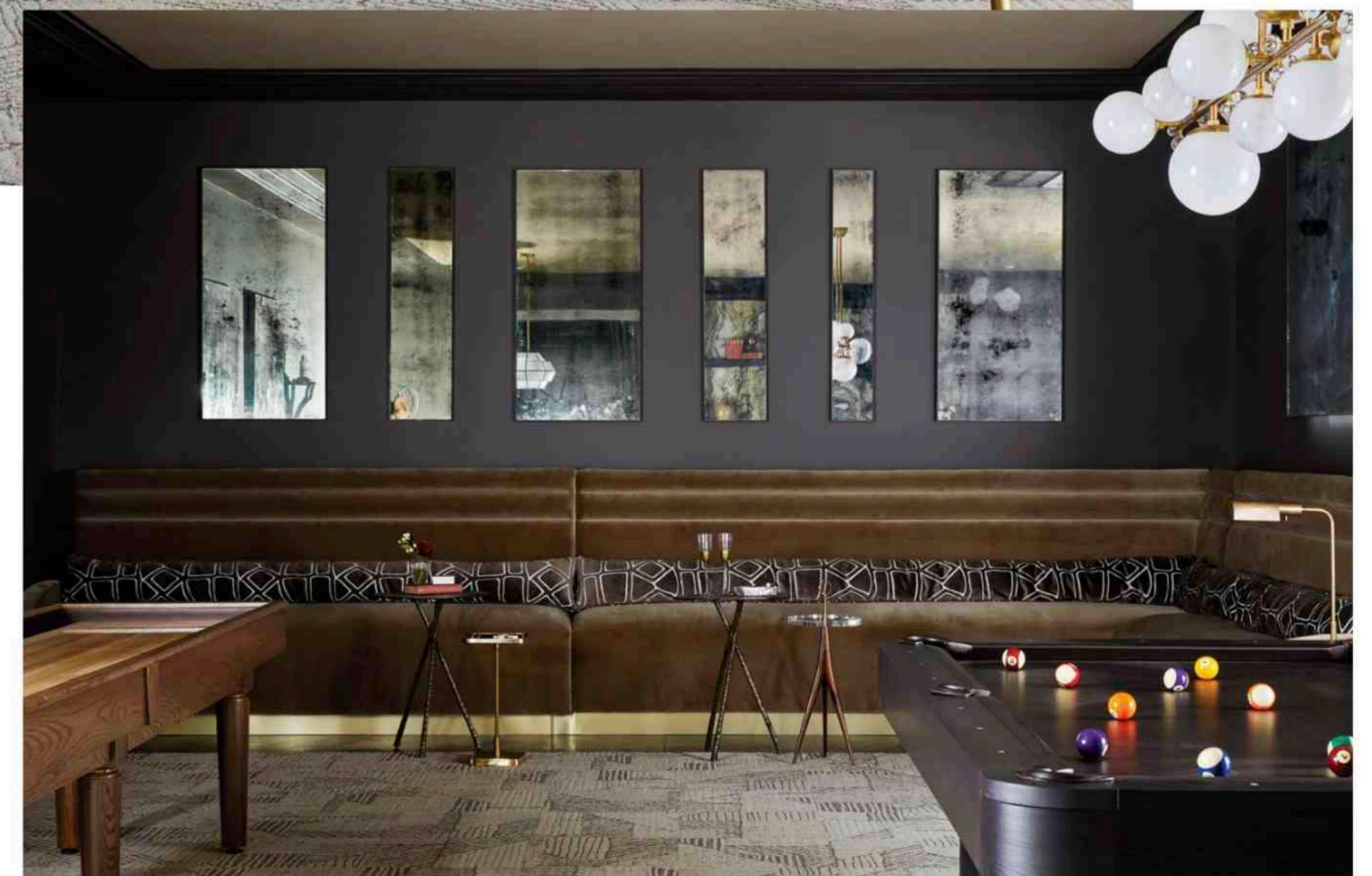
# POSH PLAYGROUND

## GAME ROOM *Valerie Garrett, Valerie Garrett Interiors with Milieu*

“The moment I walked in the space for the first time, I knew I wanted to create something rich, moody, handsome, and unexpected,” says designer Valerie Garrett, who partnered with Milieu to create a modern, speakeasy-like game room. Located on the home’s terrace level, the room’s warmly colored terrazzo floor inspired the designer’s choice of wall color, Sherwin-Williams Sealskin. Spacious enough to accommodate a custom 30-foot velvet banquette, the lounge also features a sophisticated ebonized billiard table that is finished in vegan leather. Made by Milieu, a custom bar étagère lined in Viridescent Explodeo marble is the room’s other showstopping piece. Additional furnishings essential for a good time include leather-covered club chairs, a poker game table, and a shuffleboard table. And a room where Garrett envisions “men having a night of poker, bourbon, and cigars; a family night of fun and games; or a couple’s date night away from work and kids,” the possibilities to have fun are limitless. —Jennifer Boles

BAR DETAIL BY LAUREN CHAMBERS

BILLIARD TABLE, BAR ÉTAGÈRE, POKER TABLE, SHUFFLEBOARD TABLE, SEATING Milieu  
BILLIARD TABLE LEATHER, BANQUETTE PILLOWS Kravet BANQUETTE VELVET Thibaut CHANDELIER, PENDANT LIGHT Arteriors SCONCE Visual Comfort & Co. DISTRESSED MIRRORS Mirror-tique through Milieu ARTWORK Through dk Gallery, Pryor Fine Art, Buckhead Art & Company





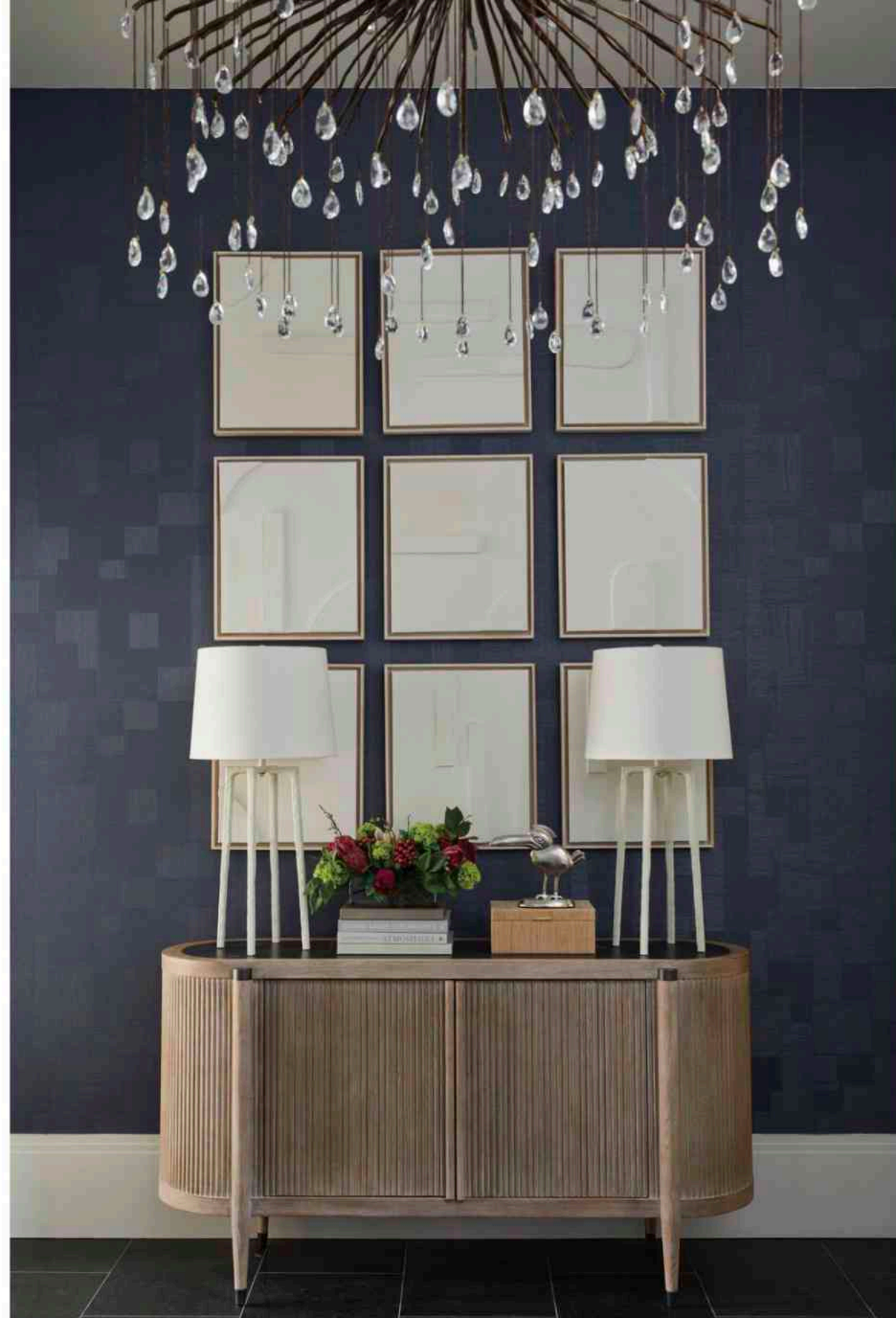
## TO THE *FORE*

**GOLF LOUNGE** *Kristin Wadsworth,  
Kristin Wadsworth Design*

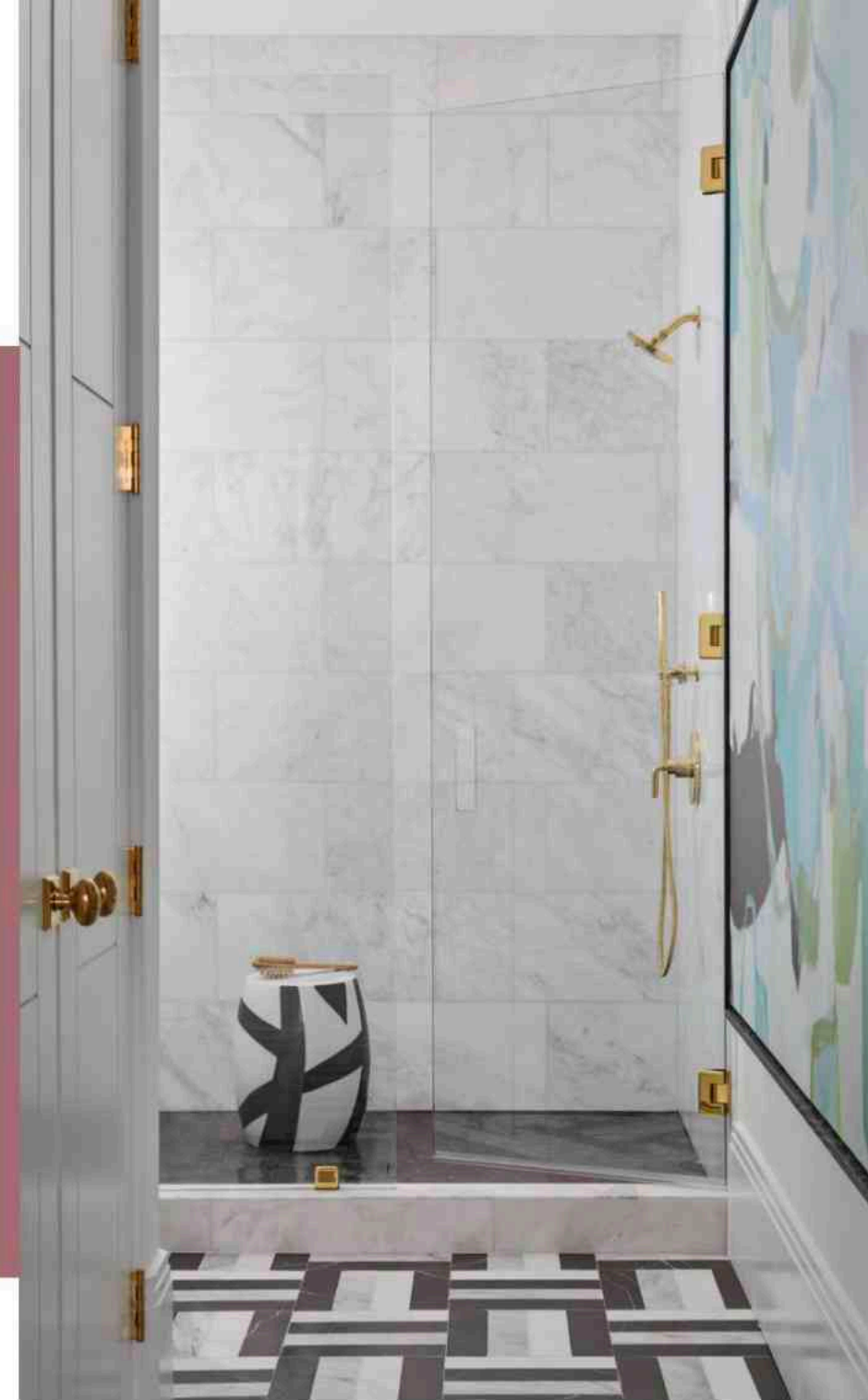
MARSHALL CONSOLE TABLE Worlds Away ARTWORK Patrick Lewis, Jennifer Keim, Christy Coole GIMLET PUB TABLE Woodbridge KIERA SWIVEL CHAIR Four Hands ALLIUM TABLE, HAPPY FLOOR LAMP Regina Andrew COFFEE TABLE CFC Noir THROW PILLOWS Freeman Custom Sewing and Interiors

Both extreme golf enthusiasts and those who simply enjoy beautiful spaces will be charmed by interior designer Kristin Wadsworth's clever design for the golf lounge. Tucked into the home's terrace level, the space has a 19-foot wall that draws guests in from the hallway. Wadsworth took inspiration from right in our backyard: Georgia's iconic Augusta National Golf Club, host of the Masters Tournament. With that in mind, she painted the walls "Masters jacket green" (which found an ideal match in Sherwin-Williams Kale Green) and commissioned a wall-sized mural from a photo of golf greats Arnold Palmer, Jack Nicklaus, and Gary Player in 1962. Since Wadsworth "loves designing spaces that include both old and new elements," she chose a vintage photo of Audrey Hepburn golfing in 1955—parasol in hand—to hang above a one-of-a-kind stool made from golf irons. The area is a playful entertaining space, with plush leather club chairs and a pub table waiting for drinks to be served while watching guests play a hole on the golf simulator.

—Jennifer Bradley Franklin



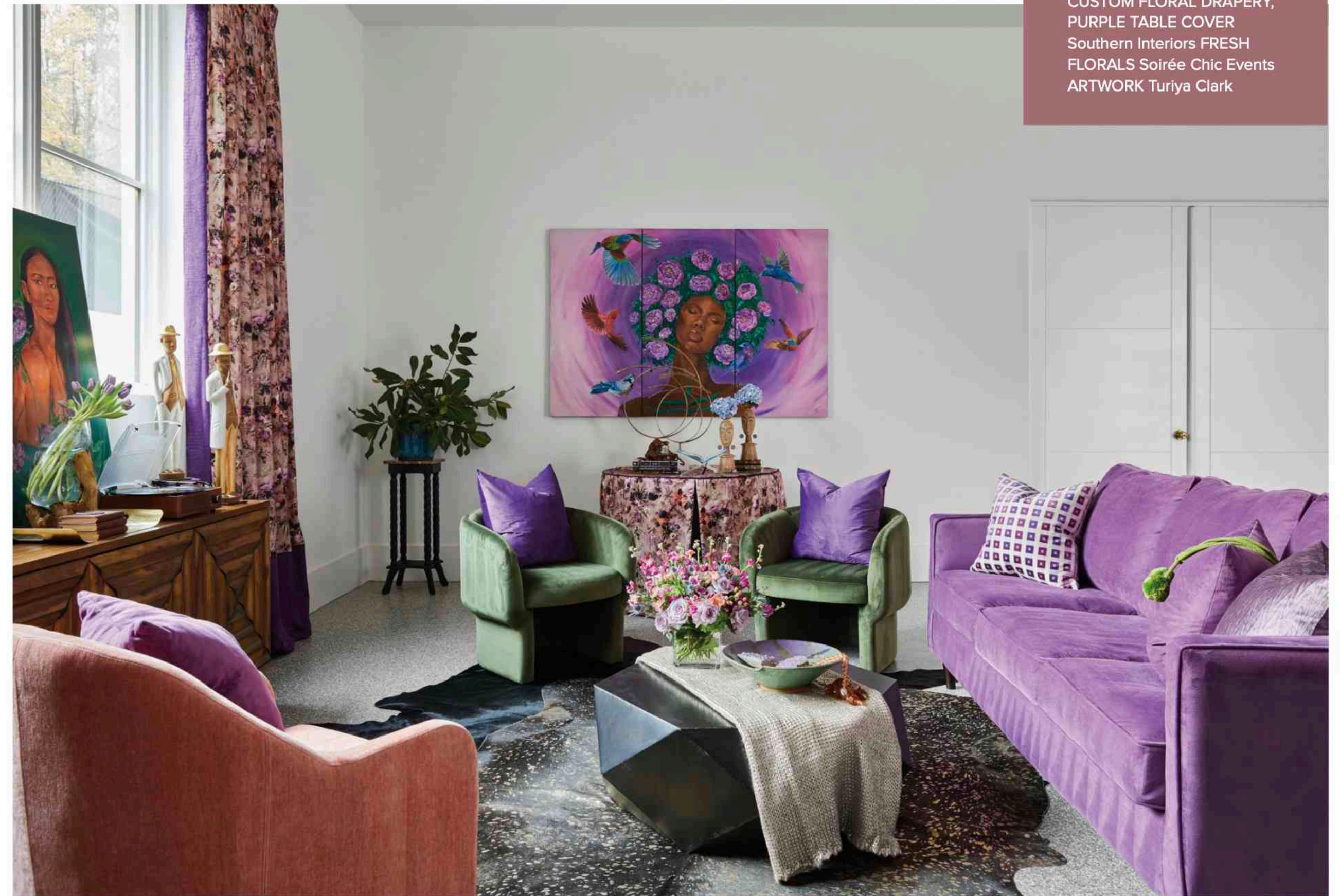
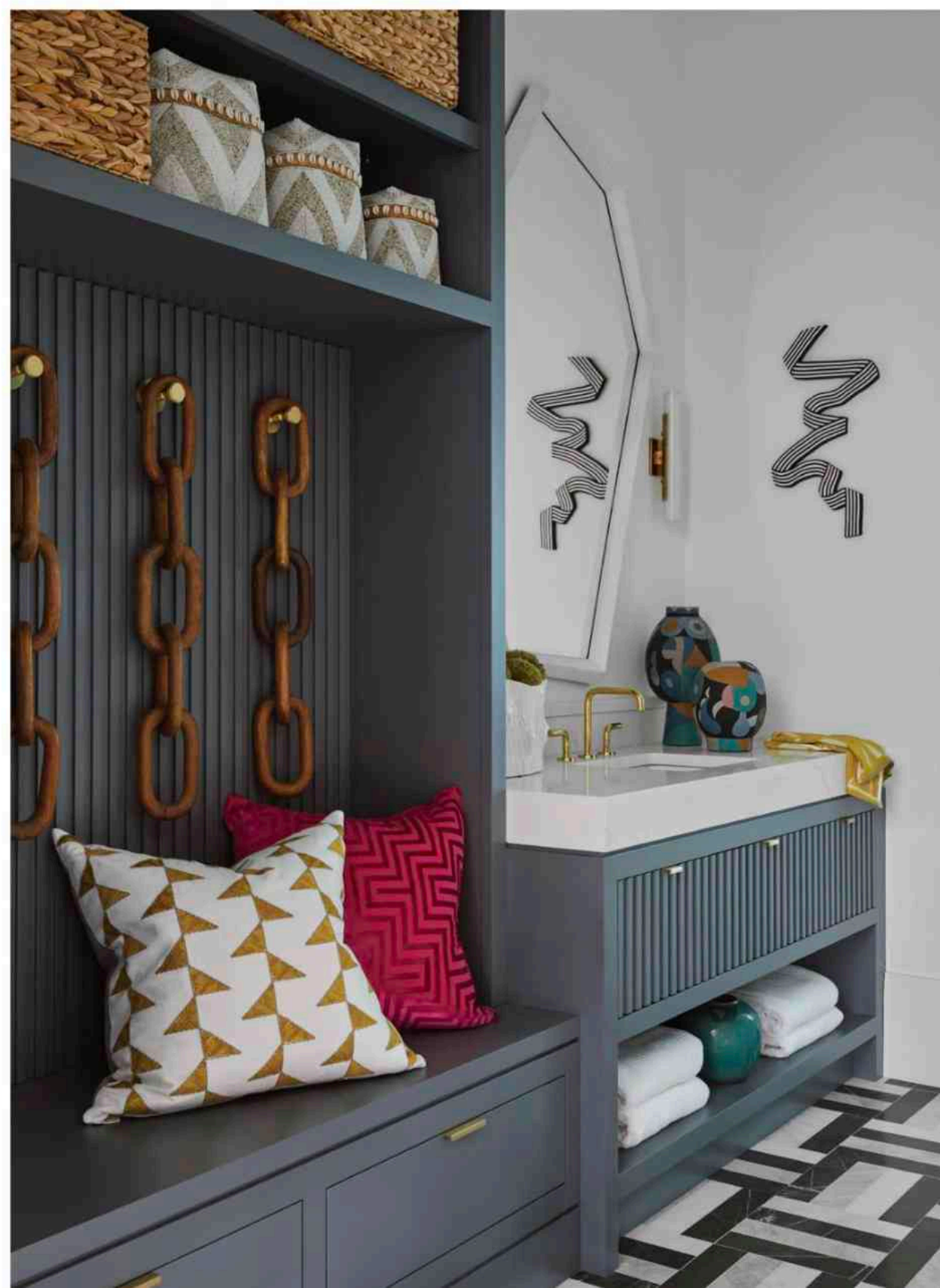
**Mudroom**  
 WALLCOVERING York  
 Wallcoverings ARTWORK  
 Through Dobwin Art,  
 Leftbank Art, Wendover  
 Art Group TABLE LAMPS,  
 TOUCAN SCULPTURE,  
 CHANDELIER Currey  
 & Company **Pool**  
**Bath** CABINETRY  
 Kingdom Woodworks  
 COUNTERTOPS AGM  
 Imports Granite &  
 Marble, fabricated by A  
 Touch of Stone, Inc. TILE  
 Renaissance Tile & Bath  
 FAUCETRY PDI MIRROR  
 Uttermost VASES Currey  
 & Company ARTWORK  
 Olivia Westbrooks, Angela  
 Chrusciaki Blehm



## PLAYFUL PANACHE

**MUDROOM AND POOL BATH**  
*Erika Hollinshead Ward,  
 Erika Ward Interiors*

To add interest to typically utilitarian spaces, Erika Ward infused the mudroom and pool bath with pops of color, texture, and elegant touches. "I want to make sure that each way you encounter the room, you find something interesting to look at," says the designer. And because the mudroom was situated off the garage, "the homeowner would likely come in this door more than they would the front door," she adds. "Thinking about it from that standpoint, I wanted the homeowner to have something really beautiful to experience day in and day out." She added a grand gesture with an eye-catching chandelier from Currey & Company and created a focal point with a textured wallpaper from York Wallcoverings and plaster artwork by Windell Dobson. In the bath, Ward incorporated painterly patterns and large-scale artwork to complement the geometric tile, while built-ins create ample storage for pool items and accessories. — *Claire Ruhlin*



CUSTOM FLORAL DRAPERY,  
 PURPLE TABLE COVER  
 Southern Interiors FRESH  
 FLORALS Soirée Chic Events  
 ARTWORK Turiya Clark

DETAIL BY LAUREN CHAMBERS

## COLOR STORY

**HOSPITALITY LOUNGE**  
*Vonda Dickerson and Karen Larkin, Vonda  
 Dickerson Interiors and Karena's Design Studio*

Designers Vonda Dickerson and Karen Larkin anchored the hospitality lounge with nods to nature and femininity. Florals and birds were a recurring theme in the drapery, fresh floral arrangements, and artwork, while pops of purple and green provide vivid contrast and black hide rugs ground the space in neutral texture. "With the hospitality lounge being the last space showhouse visitors would see, I wanted a fun way to capture their attention and draw them in," says Dickerson. "What's more fun than unexpected color?" Original artwork by Turiya Clark brings all the room's elements together. "When Turiya and I met to discuss the vision for the space, we noticed the neighbor's arbor was covered with birds just as she was showing me the triptych that became the centerpiece of the lounge," says Dickerson. "Her artwork was meant to be in the space." — *Claire Ruhlin*





SIESTA KEY OUTDOOR SOFA,  
 NEWPORT ACCENT CHAIR,  
 KEY COCKTAIL TABLE, ST  
 LUCIA CONSOLE, 5 O'CLOCK  
 BAR CART, HONOLUA BAY  
 PEDESTAL DINING TABLE,  
 SENECA DINING CHAIRS,  
 SENECA CHAISE LOUNGE  
 CHAIRS Universal Furniture  
 FIREPLACE Isokern PAVERS  
 Olde World Cast Stone TURF  
 The European Company  
 ARTWORK Elizabeth Thompson  
 BOXED THROW PILLOWS  
 Lee Jofa SALERNO PILLOWS,  
 PARKSIDE INDOOR/OUTDOOR  
 POUFS, ACADIA HAND-  
 KNOTTED INDOOR/OUTDOOR  
 RUG Serena & Lily BLUE-  
 AND-WHITE TULIPIERE The  
 Enchanted Home FIREWOOD



## EN PLEIN AIR

**PORCH AND OUTDOOR LIVING SPACES**  
*Anna-Louise Wolfe McMullin, Anna-Louise Wolfe, Ltd.*  
*with Universal Furniture*

Thanks to this stylish, inviting space with a functional fireplace and built-in overhead heaters, outdoor entertaining can be a year-round, all-weather affair. "We wanted to continue the feeling of that classic indoor-outdoor style of year-round living," says designer Anna-Louise Wolfe McMullin, who partnered with Universal Furniture on the furnishings. She drew inspiration from the surrounding landscape, including a contemporary pool surrounded by verdant turf and a boxwood-bordered garden. "We felt it important to incorporate earthy elements, such as rattan and linen, while still keeping along with our signature blue and white to create a space that is pretty, yet relaxed," she says. The space is festooned with a crisp linen sofa, rattan chairs, an inviting hand-knotted rug, and accents in blues, greens, and ochres. An adjacent covered outdoor kitchen and prep area paired with McMullin's charming outdoor oasis beckon guests no matter the season. —Jennifer Bradley Franklin

ABOVE PHOTO BY LAUREN CHAMBERS



# CLEAN LINES

**DESIGN-BUILD**  
*Pradera Group, Castro Design Studio,  
Floralis, and Live Oak Manors*

Designed by Rodolfo Castro, this 12,500-square-foot house is sleekly appointed with a stucco exterior finish and metal details, including aluminum-clad windows and a standing seam roof. Inside, French white oak floors and abundant natural light imbue the interiors with warmth. “We worked to add all the air, openness, and light of a modern house while still making it feel warm and homey,” explains Castro. Seamless indoor-outdoor living is a highlight of the home, according to its builder, Jarrett Keim of Pradera Group. With the family room and kitchen situated next to the covered patio and saltwater pool, “the exterior spaces become part of the interior living spaces,” says Keim. Outside, Lucinda Bray of Floralis designed the landscape to echo the home’s architecture, describing it as “simple and clean with layered detail to give the home a sense of year-round presence,” like the boxwood parterre garden that highlights the rear of the home. —Jennifer Boles

POOL Chattahoochee Pools PAVERS Olde World Cast Stone TURF The European Company MILLWORK Kingdom Woodworks FIREPLACE Isokern HOME AUTOMATION GHT Group LANTERNS Bevolo



*For more information on the 2023 Home for the Holidays Designer Showhouse, visit [atlantahomesmag.com/article/california-dreaming](https://atlantahomesmag.com/article/california-dreaming)*